

Introducing mCLASS with DIBELS 8th Edition

An enhanced tool to better support all students

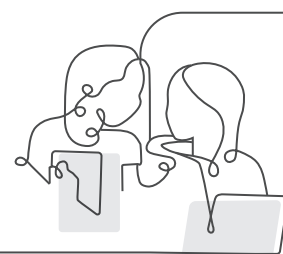
We have been working with you to make mCLASS a powerful resource that helps you determine how best to support each student, tailor instruction, and catch at-risk students early.

We're not about to change any of that. The robust assessment and instructional tools you love will still be there—but better. Here is what is new to the program in the 8th Edition: improved assessments, deeper insight into students' instructional needs, and bolstered reporting. Developed in partnership with the University of Oregon, where leading DIBELS research has been going on for decades, mCLASS with DIBELS 8th Edition is founded on the strongest-yet research base for identifying and supporting struggling readers, including those at risk for dyslexia.

What's new in mCLASS with DIBELS 8th Edition?

- Reduced assessment time and more useful data through adaptive test design
- Even stronger research basis for screening for reading difficulties, including dyslexia
- Boosted reporting and updated skill profiles to better support instruction
- Increased text quality through authentic text passages

Launching at the beginning of SY 2019–20, mCLASS with DIBELS 8th Edition is the same mCLASS you know but with a more powerful and efficient platform.



mCLASS®

We've been updating and improving
mCLASS since its debut decades ago.



What sets mCLASS with DIBELS 8th Edition apart?

The right kind of data

Consistent subtests for each benchmark period within a grade level give better insight into student skill development. You'll also receive more specific skill profiles for each student, and be able to evaluate student growth in real time, not just during benchmark periods.

Less testing, more insight

New adaptive procedures prevent overtesting for struggling students, and revised subtests with expanded difficulty coverage give you more useful data, making administration more efficient and providing you with a deeper understanding of each student's skills.

Immediate support for at-risk students

At-risk students are identified earlier, using proven observational assessment and a research basis designed specifically to help screen for reading difficulties, including those associated with dyslexia.

Authentic texts

Oral Reading Fluency is now more rewarding for your students, featuring authentic passages to boost student engagement and increase text diversity. Additionally, Oral Reading Fluency now requires only one passage.

We are here to answer any questions you may have about the new edition, and we will be providing training and resources to support you with implementation every step of the way.

For more information, email mCLASS@amplify.com or contact your Amplify representative.