

Remote and hybrid learning guide



As a truly blended program, Amplify ELA can work well in whatever scenario you encounter next fall. We have also created a set of new resources to make continuous learning even easier.

What's new: a Student Intake Survey to help you get to know your students and get a sense of skill proficiency, Remote Learning Planning Guides with modifications for remote or hybrid learning situations, flexible PD with self-guided modules, guidance for parents and caregivers to support learning at home, videos to support asynchronous remote learning, and more.



Learn where to start for back to school, and what resources are available to support your success

Amplify ELA back-to-school instructional recommendation

- Begin grade-level instruction with Unit A in every grade.
- Use the new Remote Learning Planning Guide, introduced below, to implement the modifications that suit your circumstances.
- As the school year evolves, consider the 100-Day Instructional Pathway to ensure coverage of all grade-level standards while leaving time for emerging requirements.

New ELA back-to-school resources for remote and hybrid learning

- **Amplify ELA Student Intake Survey.** Students will read a text and offer a personal written response, allowing teachers to learn more about them as readers, writers, and individuals—and get a quick sense of any skill gaps or social-emotional challenges. Built on the research behind stereotype threat and culturally sustaining pedagogy, this resource flows directly into the Unit A lessons in each grade, which also focus on personal narrative.
- **Remote Learning Planning Guides.** Starting with Unit A and rolling out throughout the year, these guides support a range of instructional scenarios, from fully remote without technology to a hybrid situation with technology. The guides:
 - Include critical modifications for each unit.
 - Allow teachers working in remote, in-class, and combined scenarios to quickly identify and provide key reading, writing, and assessment activities for students that match the current implementation mode.
 - Identify activities that work most effectively for situations where a teacher may be able to virtually meet with remote students.

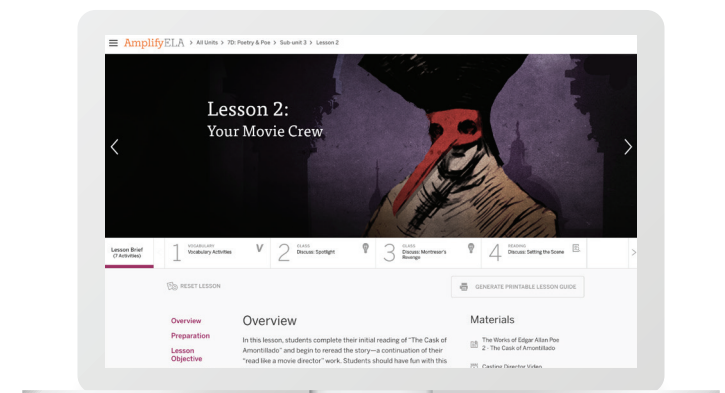
New ELA back-to-school resources for remote and hybrid learning, cont.

Unit A in every grade of Amplify ELA is already designed to support teachers as they bring students back-to-school each year. These units are built to help teachers accomplish three key goals:

1. Develop a productive community of readers and writers
2. Quickly build facility and familiarity around a small set of key skills that can be leveraged throughout the grade
3. Provide the teacher key insights into students' skill levels

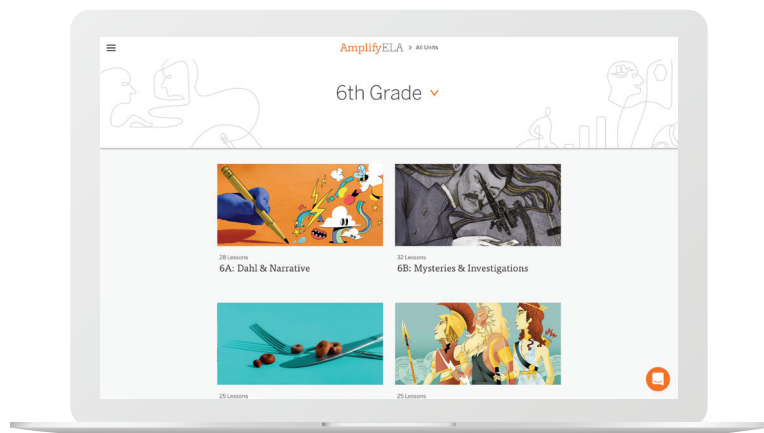
The Remote Learning Planning Guides for Unit A will make these goals explicit and strengthen the support needed to transition back into school for students and teachers.

- **Flexible PD.** The new Amplify ELA PD website will include self-guided modules for teachers to reinforce their initial training and/or to fast-track training if district schedules are further affected by COVID-19. The site will include videos, articles, and the Intercom chat allowing teachers to directly reach out to Amplify support with questions.
- **Parent/caregiver guidance to support at-home learning.** These new resources for parents and caregivers describe the goals of Amplify ELA, the literature students are reading (facilitating at-home discussions), and unit highlights such as the end-of-unit essay prompt. These will be available as Word docs so teachers can edit and modify them to fit their context.
- **Videos to support critical moments in asynchronous remote learning.** Former middle school teacher and current Amplify curriculum developer Kamilah Simpson is launching new videos with guidance and encouragement for the most critical instructional moments in each grade.



Blended program that works well in many scenarios

Amplify ELA is designed with robust teacher support for both print-focused and digital instruction. When using the digital program, student work is saved to the student's account, making it easy to move from a physical classroom to a home-based learning environment at any point in the year.



The following is recommended for remote instruction when students have access to technology

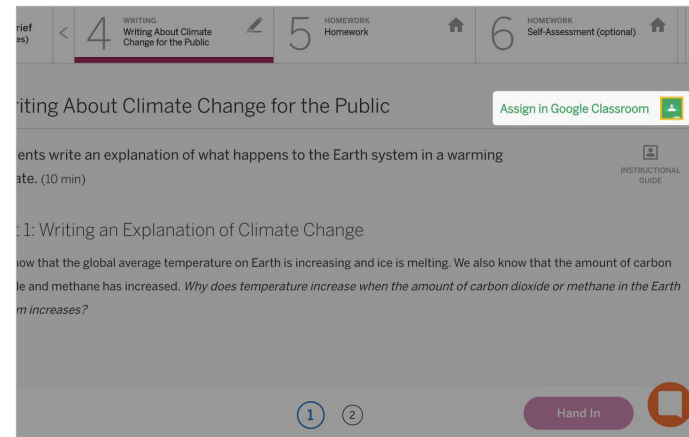
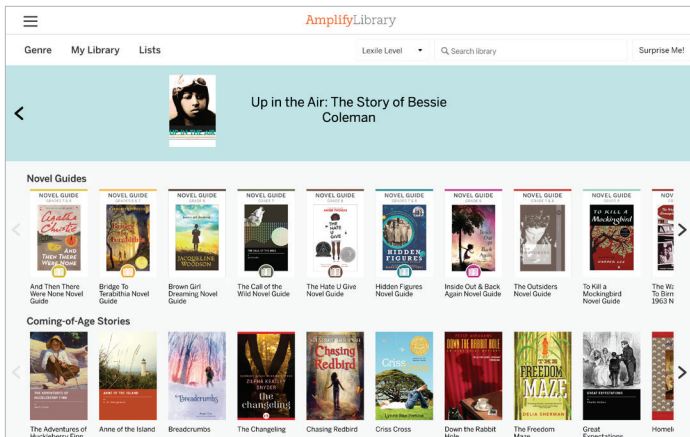
Digital curriculum: Lessons and instructional materials

All lessons, planning, and instructional materials for teachers can be accessed from any device through the curriculum login. Instructional materials include activity guides, possible responses, point-of-use-standards, and tips for facilitating classroom discussion. The teachers can view all student work—both work in progress and completed—and send feedback and grades back to students. Teachers can easily assign particular lessons and activities to students using Google Classroom.

Students also access all lesson content digitally, including eReader passages with audio, daily self-guided vocabulary activities, any lesson-related videos or images, and all reading and writing assignments. Teachers can immediately access submitted student work, and students can see teacher feedback and review and revise any submitted assignments in their My Work space.

Students can access and work in any lesson, including all assigned differentiated supports, accessibility features, and formative assessments, from any device remotely. All apps, including the Vocab App, can also be used remotely.

LEARN WHERE TO START FOR BACK TO SCHOOL, AND WHAT RESOURCES ARE AVAILABLE TO SUPPORT YOUR SUCCESS



Library and eReader

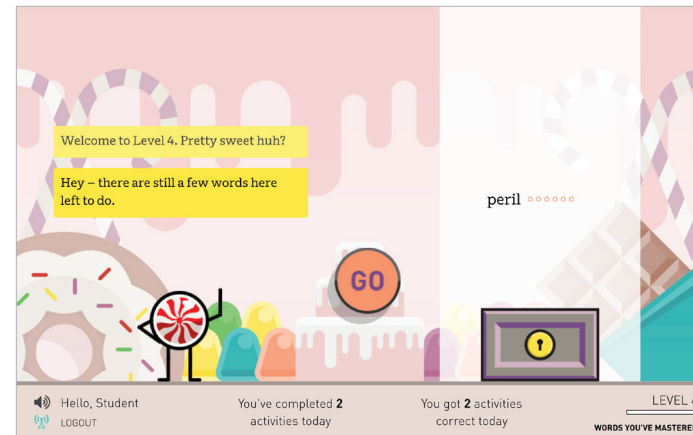
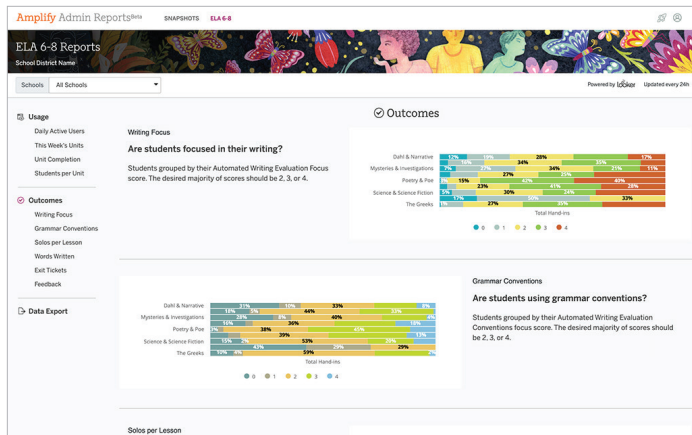
The Amplify Library comprises more than 700 classic and contemporary fiction and nonfiction books in their entirety, covering a wide range of genres, topics, and cultural perspectives. Lexile levels span grades 3–12, providing books for students with varied reading abilities. The collection includes classics such as *And Then There Were None* and *The Call of the Wild* as well as modern titles including *Walk Two Moons* and *Inside Out & Back Again*. Library tools include accessibility accommodations such as font size and line spacing.

Students can access the full Amplify Library collection from any device, including mobile devices, and download any texts for offline reading. Amplify has integrated core program texts into the library and developed student novel guides to accompany some titles. These guides—available in both PDF and Word formats—allow students to work independently in offline, distance learning situations.

Assign in Google

Teachers can assign lessons or activities in Google Classroom with the click of a button. Students will then see the links to the relevant Amplify ELA activity in their Google Classroom stream.

LEARN WHERE TO START FOR BACK TO SCHOOL, AND WHAT RESOURCES ARE AVAILABLE TO SUPPORT YOUR SUCCESS



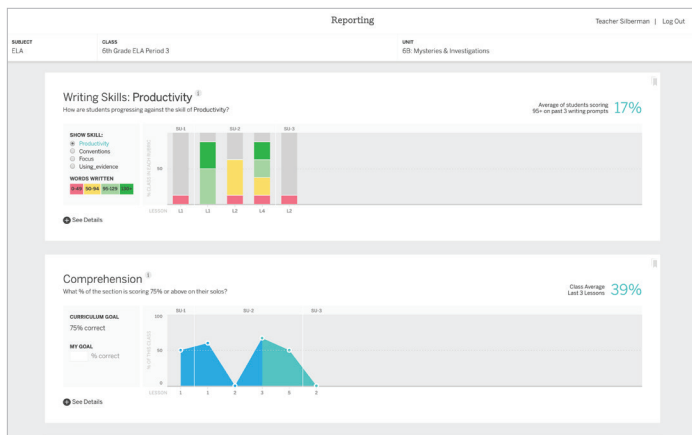
Administrator reports

One of the hardest things for district administrators in the remote learning context is knowing what is happening across their “classrooms.” The new Administrator Reporting dashboard will give admins a view into how their curriculum is being used and how their students are performing on key activities and assessments.

Vocab App

Amplify’s Vocab App uses game-like activities to help students master key Tier 2 words from the unit’s texts. The app adapts to the mastery level of each student, including ELLs. Remote learners with devices retain full access to the Vocab App, and those without access to technology are supported with the key words placed in the margins of the text in the print Student Editions. These students also benefit from printable practice sheets.

LEARN WHERE TO START FOR BACK TO SCHOOL, AND WHAT RESOURCES ARE AVAILABLE TO SUPPORT YOUR SUCCESS



The screenshot shows the AmplifyClasswork interface for a student named Susol. The prompt is "Write: Deciding to Face the Monster" and asks the student to describe two details from the text that impact their decision to go or not go. The student's response is displayed, with several phrases highlighted in yellow. The teacher, Tsal, has provided feedback in the "COMMENTS" section, including "fantastic use of evidence!! Great job Mike." and "This is very dark imagery". A "Feedback sent" button is visible at the bottom.

Formative assessments and reports

Integrated writing prompts, lesson Exit tickets, and Solos (daily independent reading accompanied by auto-scored activities) ensure regular formative assessment of reading and writing. These assessments are auto-scored when students submit their work digitally, and daily teacher reports show progress over time. Amplify's Embedded Assessment Measure (EAM) also provides a weekly report that allows a teacher to strategically assign additional supports. All Solos can be completed and submitted using Amplify's mobile Solo app. All Solos and formative writing prompts are available in print for students without remote access.

Classwork and My Work

Classwork provides teachers quick and complete access to all student work submitted digitally. Teachers can quickly know who's done their work, see all auto-scored activity results, provide feedback, and assign a grade to any assignment. Students working in the digital program can review all their work, grades, and teacher feedback in My Work, a customizable space where they can organize a portfolio of Amplify work, as well as revise and submit activities.

The following is recommended for remote instruction when students do not have access to technology

Print Teacher Editions, Student Editions, and student Writing Journals

The print materials contain the full scope and sequence of the Amplify core lessons for grades 6–8 for both teachers and students, allowing the class to transition between print and digital formats as needed. The print Teacher Edition includes activity guides, point-of-use standards, and differentiation guidance, and clearly identifies digital assets from the platform (such as videos or apps) that can be incorporated into print-based lessons. Lessons in the print Student Edition reflect each digital lesson, but have been modified to work effectively in print. Students will find all lesson texts, images, and instructions there. Students complete key writing assignments in the student Writing Journals that accompany each unit.

Students without access to devices can continue to complete key reading and writing assignments using the print Student Editions, student Writing Journals, and print Solo workbooks.

Additionally, teachers can access, print, and mail student novel guides for up to 12 most commonly taught novels from the Amplify Library. Students can access many of these novels via the public library.



Summary of remote and hybrid implementation options

Amplify ELA’s blended curriculum already offers fully-aligned digital and print Student and Teacher Editions, allowing teachers and families to support a variety of learning situations—from asynchronous remote to live, in-class teaching—and transition as needed. Refer to the table below to identify which elements of the program can be used to teach during periods of extended remote learning with and without technology, as well as hybrid learning that combines in-person and remote learning.

Remote learning



ONLINE

Students learn at home **and** have access to some level of technology

Instructional resources to support this mode:

Student Intake Survey, Remote Learning Planning Guides, flexible PD, guidance for supporting distance learning at home, videos to support critical moments in asynchronous remote learning, Digital curriculum, Amplify Library and eReader, Assign in Google, administrator reports, Vocab App, formative assessments and reports, Classwork and My Work



OFFLINE

Students learn at home **and do not** have access to technology other than potentially smartphones

Instructional resources to support this mode:

Student Intake Survey; Remote Learning Planning Guides; flexible PD; guidance for supporting distance learning at home; print Teacher Editions, Student Editions, and Writing Journals

SUMMARY OF REMOTE AND HYBRID IMPLEMENTATION OPTIONS

Hybrid learning



IN-PERSON/ONLINE AT HOME

Students spend some time in school and some at home **and** have access to technology

Instructional resources to support this mode:

Student Intake Survey, Remote Learning Planning Guides, flexible PD, guidance for supporting distance learning at home, videos to support critical moments in asynchronous remote learning, Digital curriculum, Amplify Library and eReader, Assign in Google, administrator reports, Vocab App, formative assessments and reports, Classwork and My Work



IN-PERSON/OFFLINE AT HOME

Students spend some time in school and some at home **and do not** have access to technology

Instructional resources to support this mode:

Student Intake Survey; Remote Learning Planning Guides; flexible PD; guidance for supporting distance learning at home; print Teacher Editions, Student Editions, and Writing Journals

For more information on Amplify ELA,
visit [amplify.com/ela](https://www.amplify.com/ela).



Amplify.