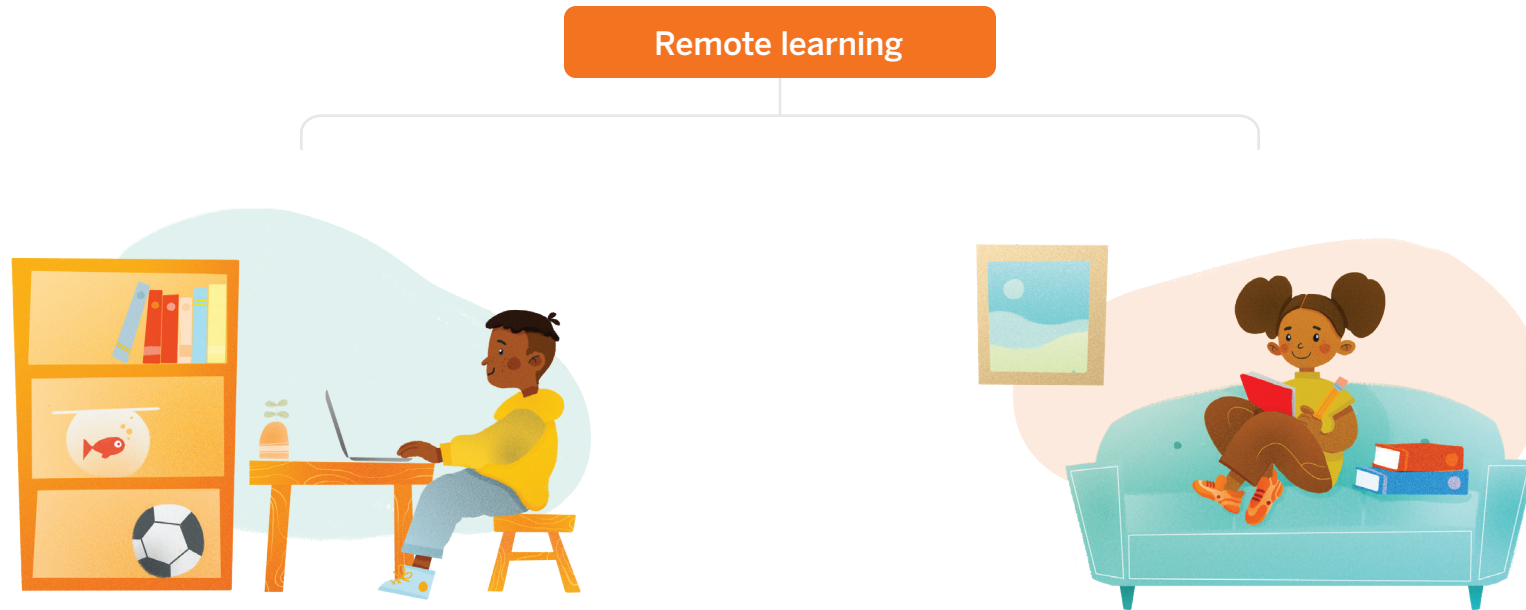


# Remote and hybrid learning guide



While back to school will look different for every district, Amplify Reading provides the personalized instruction and practice students need to catch up and keep up on foundational skills. With reading growth in just 30 minutes of use a week and a completely student-centered design, Amplify Reading is the perfect program to bridge learning gaps both in the classroom and at home.



### Online

Students learn at home **and** have access to some level of technology

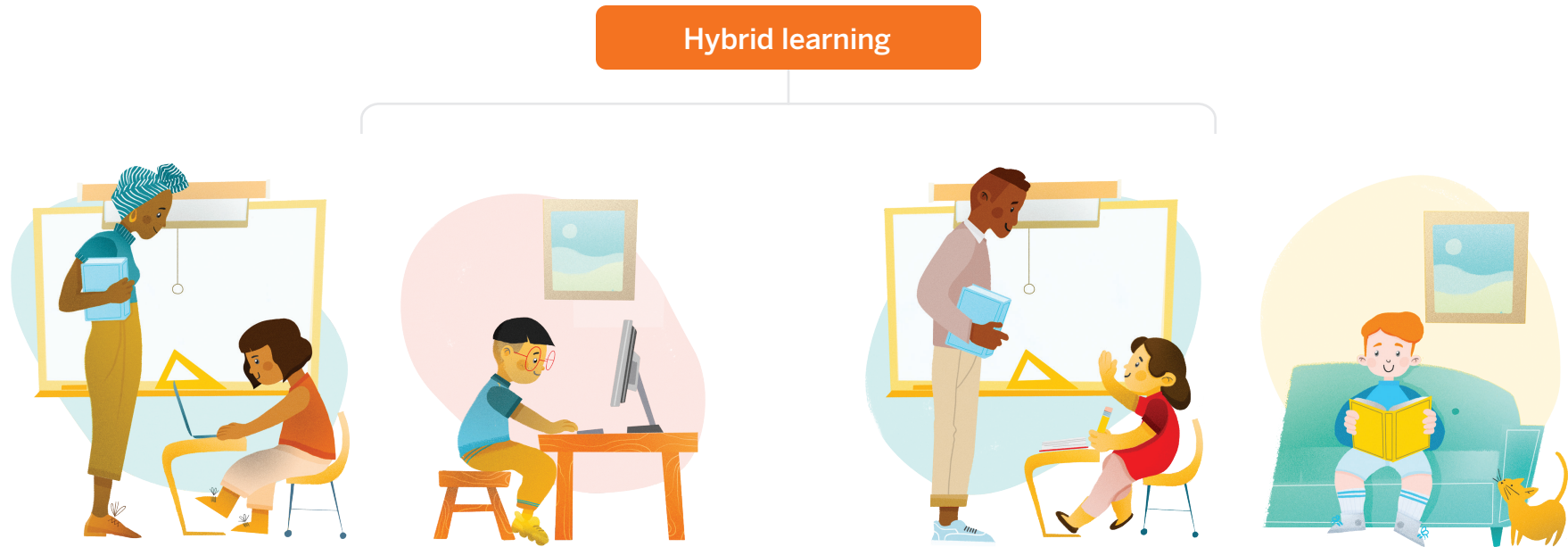
### Offline

Students learn at home **and do not** have access to technology other than potentially smartphones

---

### Examples

- Continuation of spring 2020 remote learning



### In-person/Online

Students spend some time in school and some at home **and** have access to technology

### In-person/Offline

Students spend some time in school and some at home **and do not** have access to technology

### Examples

- A/B schedules where smaller groups of students are allowed on campuses
- Staggered starts
- Schools are opened for a period of time, then closed for a period of time





# How to use Amplify Reading for remote learning

Amplify Reading is ideal for personalized practice and instruction during remote learning. Students can use it on their own (no adult supervision needed!) on a variety of common devices, including Chromebooks, tablets, laptops, and desktops. Below you'll find resources and recommendations for supporting students in developing their reading skills at home with Amplify Reading.

- **Have students use Amplify Reading for 30–45 minutes a week in 15-minute increments.** Studies show that students make significant reading growth with just 30 minutes a week.
- **Assign Amplify Reading as a consistent part of a remote learning routine.** Amplify Reading helps students apply and extend the foundational skills and comprehension processes they're working on in core instruction. It also helps fill in gaps that may emerge during periods of extended remote learning.



## HOW TO USE AMPLIFY READING FOR REMOTE LEARNING

- **Use Amplify Reading data to check in with individual students or groups of students to work on a skill.** Within the dashboard, teachers will receive real-time insights into students' progress and can access targeted activities to use with students over Zoom or a similar platform.
- **Leverage extension activities** to provide additional opportunities for skill practice. **These printable activities can be assigned to students as part of their weekly Amplify Reading routine, and each activity has instructions in both English and Spanish.**

### Sample daily schedule

Virtual teacher-led core instruction lesson	Varies by district
Amplify Reading individual instruction and practice	15 minutes
Independent writing and reading or Amplify Reading extension activity	30 minutes
Virtual small-group targeted instruction with Amplify Reading's teacher-led activities	30 minutes

### Family resources

- Amplify Reading features a parent portal and introduction videos to help get parents the information they need, while freeing up the teacher to focus on instruction.
- Easy, downloadable login PDFs are available in English and Spanish.
- Support resources and videos are also available in English and Spanish.



Parent portal

### Training and support anywhere, anytime

In addition to live webinars, teachers can access self-paced training resources from within their account to ensure they can get their students started in any environment.



Teacher resources



Student resources



# How to use Amplify Reading for hybrid learning

You may be considering staggered schedules or alternating between remote and in-person days. Amplify Reading's resources for hybrid learning ensure that students continue to develop critical foundational skills both in the classroom and at home.

We recommend students continue to use Amplify Reading independently at home on remote learning days while teachers work directly with students when they're in class. In the classroom, teachers can support students in the following ways:

- Teachers can use Amplify Reading to check in with small groups or individual students about their reading progress and adventures in Bookerton. Meanwhile, other students can continue working on Amplify Reading.
- Teachers can use insights and teacher-led activities from Amplify Reading to work with small groups or individual students to target specific skills. Meanwhile, other students can continue working on Amplify Reading.
- The Classroom Curioso kit is a great way to engage the full class in their Amplify Reading journey while together in the classroom.

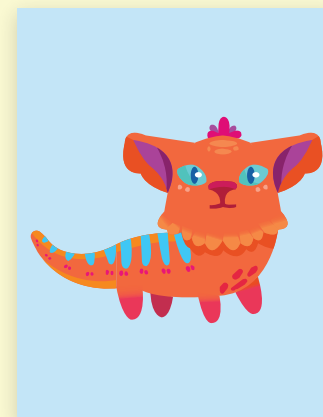
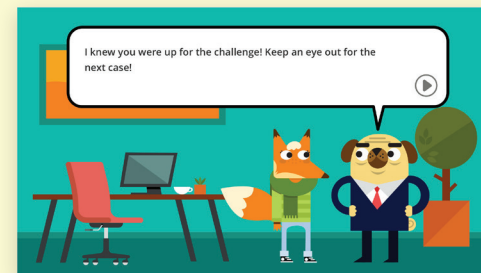
## HOW TO USE AMPLIFY READING FOR HYBRID LEARNING

### Sample daily activities

Remote days	In-person days
Virtual teacher-led core instruction lessons	Teacher-led core instruction lessons
Amplify Reading individual instruction and practice	Small group rotations: <ul style="list-style-type: none"><li>• Amplify Reading</li><li>• Core program activities</li><li>• Amplify Reading teacher-led small-group targeted lessons</li></ul>
Independent writing and reading or Amplify Reading extension activity	Amplify Reading extensions and classroom activities
Virtual small-group targeted instruction with Amplify Reading's teacher-led activities	

### “What resources should I use if students have limited technology access at home?”

We understand that access to technology is a significant barrier for many of our students. If students have limited or no device access at home, sending home Amplify Reading extension activities allows students to continue to work independently during remote days.





# Easy placement and new reporting features

Amplify Reading accelerates student growth with just 30 minutes a week of independent use in any learning environment where a student has access to a compatible device and internet. And getting set up with Amplify Reading has never been easier! Students can now log into Amplify Reading via a QR code or through our new integration with **Clever** and **ClassLink**.



## Placement options to meet every need

Once students are in the program, we ensure that they're making the most of their weekly sessions with three placement options to jump-start their learning.

Placement can be determined by any of the following methods:

- mCLASS® data
- A built-in placement tool (no assessment needed!)
- Third-party data:
  - i-Ready
  - Istation ER
  - Istation AR
  - easyCBM
  - earlyReading
  - FAST CBMr
  - FAST aReading
  - Star Reading
  - STAR Early Literacy
  - MAP (NWEA)

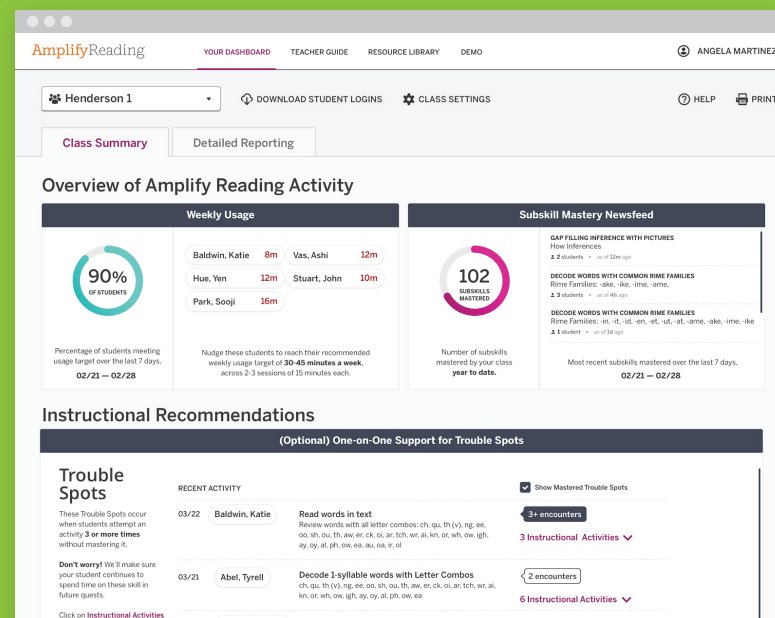
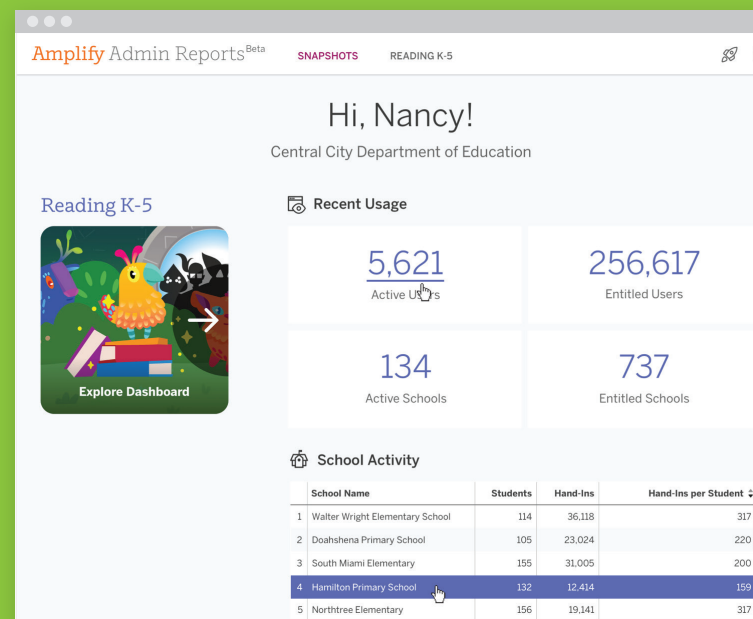
## EASY PLACEMENT AND NEW REPORTING FEATURES

### Deeper data insights to inform targeted instruction

With new features launching July 1, educators will receive robust insights into their students' progress whether they're using Amplify Reading at home or in the classroom.

These new features include:

- More granular performance and progress data for each student.
- Classroom newsfeeds of trouble spots, subskill mastery, and student progress.
- Expanded teacher-led instructional resource coverage.
- Administrator dashboard with real-time usage insights.



For more information on Amplify Reading,  
visit **[amplify.com/reading](https://amplify.com/reading)**.



Amplify.