

Amplify Reading: Effective distance learning

by Amplify Education, Inc.



Amplify.

Easy Remote Setup

Login Options

There are several different ways your students can access Amplify Reading from home: If your school uses one of these solutions and is integrated with Amplify Reading, this is the easiest way to streamline the login experience for your students.

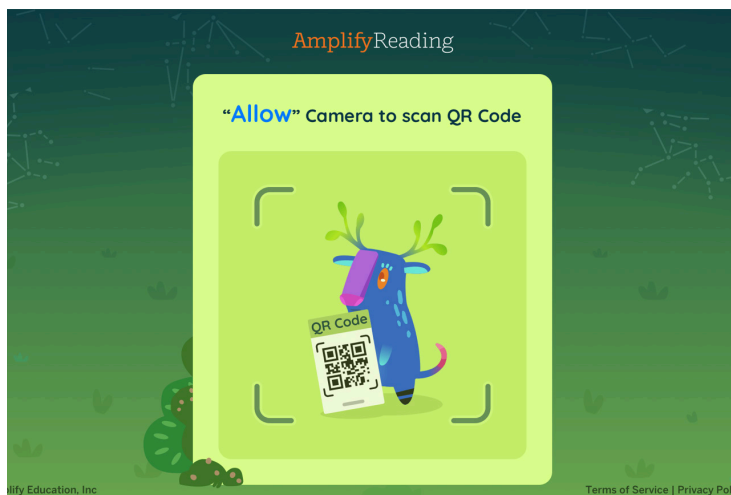
Unsure if you can use this method? Ask your administrator if this is set up for Amplify Reading.



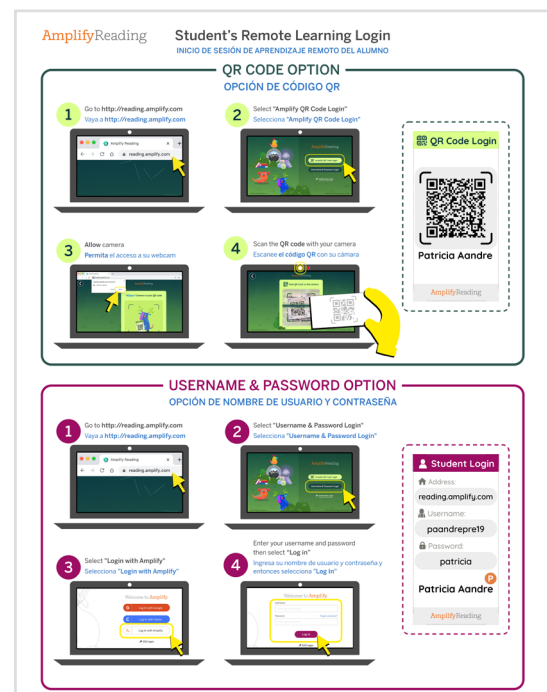
Credential Distribution

If not leveraging a district platform, your students will be using QR Codes or usernames/passwords to access Amplify Reading, you will need to prepare and distribute their login credentials.

You can easily do this by logging into your teacher dashboard and clicking on Get Student Logins, and then clicking on Print/Download for each individual student. This will generate PDFs for each student with their unique login credentials, which can then be shared with parents.



QR Code Login Screen



Monitor student usage and performance

AmplifyReading

YOUR DASHBOARD

TEACHER GUIDE

RESOURCE LIBRARY

DEMO

ANGELA MARTINEZ

Martinez 1

DOWNLOAD STUDENT LOGINS

CLASS SETTINGS

HELP

PRINT

Class Summary

Detailed Reporting

STUDENT	DAILY LOGIN Last 24 Hours	USAGE Last 7 Days	SUBSKILLS MASTERED vs. Target YTD	Phonological Awareness	Letter-Sound Correspondence	Letter Combinations	Early Decoding	Advanced Decoding	Micro- comprehension	Key Ideas & Details	Craft & Structure	Integration of Knowledge & Ideas	Vocabulary	eReader	Fluency
Abel, Tyrell	—	10m	8/20												
Ahrens, Manuel	—	20m	2/21												
Akiyama, Shrinivas		32m	12/21												
Baldwin, Katie		40m	21/20												
Bhattacharya, Samuel	Friday, 5/15/20, 3:36PM 	30m	10/22												
Dedrick, Otylia		32m	15/22												
Douglass, Jamal		36m	15/25												
Filipowski, Yochanan		31m	30/25												



The Daily Login column uses icons to show whether a student has logged in during the previous 24 hours. A green check mark indicates that a student has logged in; a grey subtract symbol displays if they have not. Hovering over either icon reveals a timestamp of the student's most recent login.

20m

The Usage column shows how much time students have spent in Amplify Reading in the last seven days. Teachers can click on a student's usage time to view a detailed breakdown of their time spent in the the Student Detail view.

15/22

Subskill mastery targets, are targets for how many subskills we expects students to master from thier placement point. This will allow you to monitor whether they've met those targets, how students are progressing.



Trouble spots indicates the student has struggled with content within that skill domain. To limit frustration, the student is given a (brief) break from that content and will encounter it again later in the learning progression.



Our support teams can be reached from 7 a.m. to 7 p.m. EDT, Monday through Friday. email help@amplify.com, phone number or reach us via Intercom chat.

Student Experience Tips

Independent practice with Amplify Reading

Amplify Reading can easily be used at home. Where available, mCLASS data are used to place students in appropriate games and levels. Games are adaptive, so students are always working on the skills they need most.



Setup Easy Access

Have your students bookmark Amplify Reading on their device for quick and easy access to the program. Use your daily login column in the Teacher Dashboard to see when your students last logged in or additional support is needed to assist your students with login. Practice logging in with your students until they can do it independently.



Headphones on!

Ensure students have headphones or are in a quiet place when they play. We highly recommend that students wear headphones during their use of the program. This allows for less distraction as well as better hearing of audio in the games.



Meet Alyx

A mentor and guide for students throughout the K-3 portion of the program. She is there to both frame and make explicit for the youngest students how to engage with the game world. During any game you can click on Alyx to repeat instructions. Alyx also provides feedback and encouragement.



Instructional Supports

All of our games and books include a variety of instructional supports, such as reveal words (definitions for grade-level vocabulary words), read aloud option, and word highlighting, so that all students—regardless of reading level—can access and learn from them.



Spanish Language Toggle

Students can access the Spanish settings via the “Settings” button. New and expanded supports for Spanish-speaking students using Amplify Reading will allow students to access rigorous, grade-level reading content even if English is not their primary language.



Keep going, you're growing!

Amplify Reading rewards students both for their effort and mastery of skills within the program. Download certificates and extension activities so that you can celebrate your students' progress.

Establish a Routine

Put your device to sleep at night. Building an evening routine around charging student devices will help to ensure they are ready for the next day.

It's time for Amplify Reading. Help your students develop a consistent schedule for their time playing Amplify Reading. We recommend you allow students to play for 10-15 minutes per session, 2-3 times a week.

Take a two minute wiggle or stretch. Before sitting down to play, students will be more comfortable and focused if they take a minute or two of physical activity before they transition into a period of self directed learning.

Headphones on and plugged in. We highly recommend that students wear headphones during their use of the program. This allows for less distraction as well as better hearing of audio in the games.

Keep going, you're growing! We encourage students to independently play Amplify Reading. The program is adaptive and will both respond to student performance as well as report on where students are being challenged.

Ways to Connect

There is no substitute for in-person classroom experiences, but Amplify Reading can help you and your students to stay connected while school is remote.

Quest + Game Summaries: Students playing Amplify Reading will move at their own pace, so they may not be working on the same quest or games at the same time. Your dashboard will show what quest each student is working on and what games are in their current quest. We have quest summaries and game overviews online to support you making connections with your students as they progress through the program.

Extension Activities: If your students complete their Amplify Reading session, our team has created extension resources to support your students' learning and to help bring the digital experience to life beyond their device!

Quest Completion Certificates: Your students will encounter 24 quests throughout the school year. Download and personalize certificates to celebrate how far they've gone!

General Discussion Prompts:

- What do you want to learn today?
- What are you excited or nervous about?
- Tell me about your favorite game?

