

Amplify Reading Start Guide

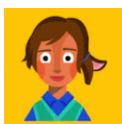
Start now.

LAUSD has purchased Amplify Reading for K-5 schools! When your students are not learning from you, they can continue to learn on their own. And the more your kids are on it, the better they do in reading.

This year, we have made it easier than ever for teachers and students. Students do not have to wait to be assessed on DIBELS to be placed into the program.

Amplify Reading now has a **new placement tool** where students are placed based on their initial responses, the minute they sign on. Once they are assessed in DIBELS, the program will automatically adjust based on that data and give them the skills they need practice in. Teachers and students are now able to directly connect to Amplify Reading from **Schoology with their SSO**. (Teachers no longer need a class login or QR code for their students.) Teachers and administrators have **additional and new reporting features** on the Amplify Reading dashboard to remotely support the progress of students.

Get started.



1. Log into Schoology @lms.lausd.net
2. Locate/Add the Amplify Reading: Teacher Edition and Student Edition
3. Click and directly connect. (No additional login required.)

Get more.

Find these resources and downloads at <https://www.amplify.com/lausd>

for Administrators

- [Administrator Dashboard Tutorial](#) (14 mins)
- [Remote Learning Guide for Amplify Reading](#)

for Teachers

- [Initial Training Video](#) (17 mins)
- [Amplify Reading 2020 Updates](#)

for Parents/Caregivers

- [Amplify Reading Family Resource Site](#) (English)
- [Amplify Reading Family Resource Site](#) (Spanish)



Amplify/LAUSD microsite

<https://www.amplify.com/lausd>

Email

help@amplify.com

Phone

(800) 823-1969
M-F 4am-7pm PST
S-Su 8am-4pm PST

Amplify Schoology Group

Access Code: BJW5-XVM5-2B4X7