

Program & structure

Built for middle school students and teachers



What is Amplify ELA?

Amplify ELA is a blended curriculum designed specifically for grades 6-8. The heart of every lesson is the text. We enable teachers to teach skills through texts and develop their students' muscles for building meaning through reading. With Amplify ELA, students learn to attack any complex text and make observations, grapple with interesting ideas, and find relevance for themselves in their own lives.

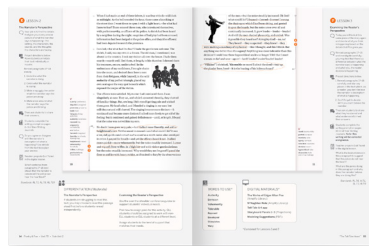
We are the program for middle school teachers. We offer rich texts that are a delight to teach, better connections with your students through powerful differentiation and assessment tools, and step-by-step instructional guides and resources that save you time and simplify your day-to-day experience.

Component overview

Digital teacher edition



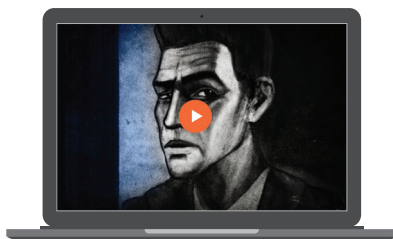
Print teacher edition



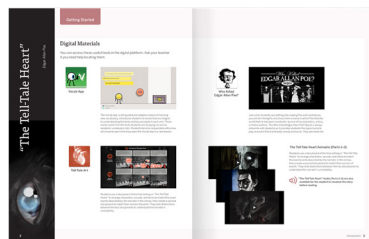
Teacher projection materials



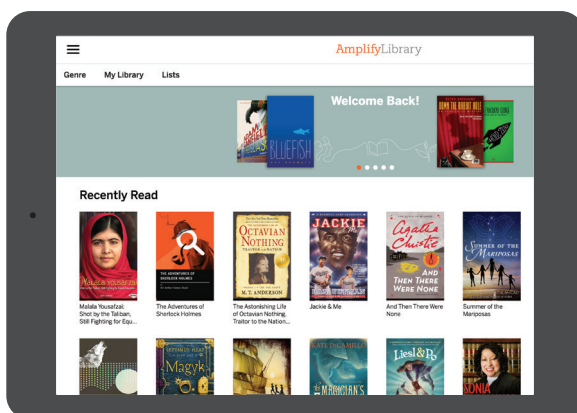
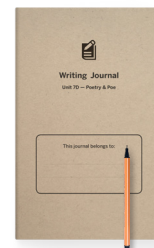
Digital student edition



Interactive student print edition



Student personal writing journal



PLUS+ Amplify's Digital Library

The Amplify Library is free with the program and offers 650 classic and contemporary fiction and nonfiction texts. These texts are all aimed at fostering a love of reading and learning in students with a wide range of reading abilities and interests.

Year at-a-glance

Each grade includes multiple units centered on literary or informational texts, delivered in several media. Your classroom will also benefit from two to three immersive learning experiences called Quests and a dedicated Story Writing unit.

Grade 6

Dahl & Narrative
Mysteries & Investigations
The Chocolate Collection
The Greeks
The Summer of Mariposas
The Titanic Collection

Grade 7

Red Scarf Girl & Narrative
Character & Conflict
Brain Science
Poetry & Poe
The Frida & Diego Collection
The Gold Rush Collection

Grade 8

Perspectives & Narrative
Liberty & Equality
Science & Science Fiction
Shakespeare's Romeo & Juliet
Holocaust: Memory & Meaning
The Space Race Collection

Lesson at-a-glance

Amplify ELA lessons follow a structure that is grounded in regular routines but flexible enough to allow a variety of learning experiences. Lesson structures vary from day to day, ensuring that students are always engaged.



Build vocabulary (5 minutes)

Build vocabulary
Students work independently to build key vocabulary with the adaptive Vocab App.

or

Teacher-student check-ins
Teacher greets students and makes sure they're set up for success.



Collaborate and interpret text (15–20 minutes)

Work with text out loud
Students make meaning by interpreting audio and dramatic performances of the text.

or

Work visually
Students make meaning by visually conveying ideas in a text.

or

Work with text as theater
Students make meaning by planning and performing dramatic interpretations of a text.

or

Select the best evidence
Students closely reread passages to identify and analyze language that supports an idea.

or

Use the text as referee
Students partner to talk through questions, using specific places in the text to come to a consensus.

What teachers have to say

Amplify ELA is savvy about the challenges of teaching middle school and is passionate about helping students and teachers alike experience the rewards of a rich and robust curriculum.

“It was engaging for students, fun and easy to teach, and led to deeper discussions and written responses than I have seen in a long time! The embedded differentiation helped ensure students had just the right amount of challenge/supports. I wish I had this earlier in my teacher career!”

—Ashley, grade 8 teacher, Washington



Develop and present ideas
(15–25 minutes)

Try It on

Students try their hand at writing like the authors they are reading, incorporating new techniques using classic and contemporary works as models.

or

Write for an authentic audience

Students use independent writing time to focus their ideas and express them in a way that will inform or persuade their audience.

or

Revise

Students change, delete, and reorder text; they consider the impact of these changes on the clarity and power of their communication.

or

Debate

Students engage in formal or informal group debates where they develop claims, anticipate and respond to counterclaims, and convey information persuasively.

Reflect
(5–10 minutes)

Exit ticket

Quick snapshot of students' understanding of a focus standard.

and

Wrap-up

Share and respond.

Synthesize or extend thinking.

Preview upcoming elements.

Independent work
(20–60 minutes)

Complete solo

or

Read independently

or

Teacher uses time to prepare for next class session

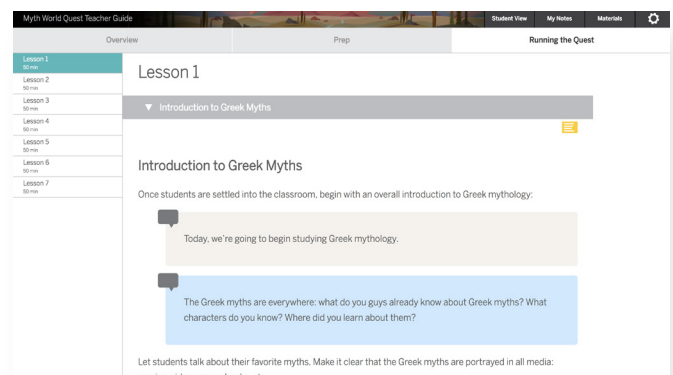
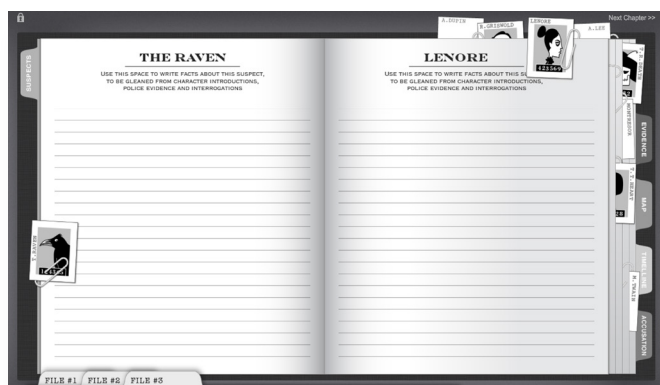
Go online! amplify.com/ELA

Let's go on a Quest!

Quests weave adventure into the development of analytical and writing skills required by the standards. Through week-long interactive explorations, students extend their knowledge and apply it in new ways.

A unique learning experience for teachers and students

Students solve the mystery of who killed Edgar Allan Poe, explore mythological Greece and help characters break out of their stony prisons, or virtually experience a neurological disorder — all while applying reading and writing skills. No matter what adventure your students embark on, our Quests ensure they stay engaged while inspiring active learning and rich language development.

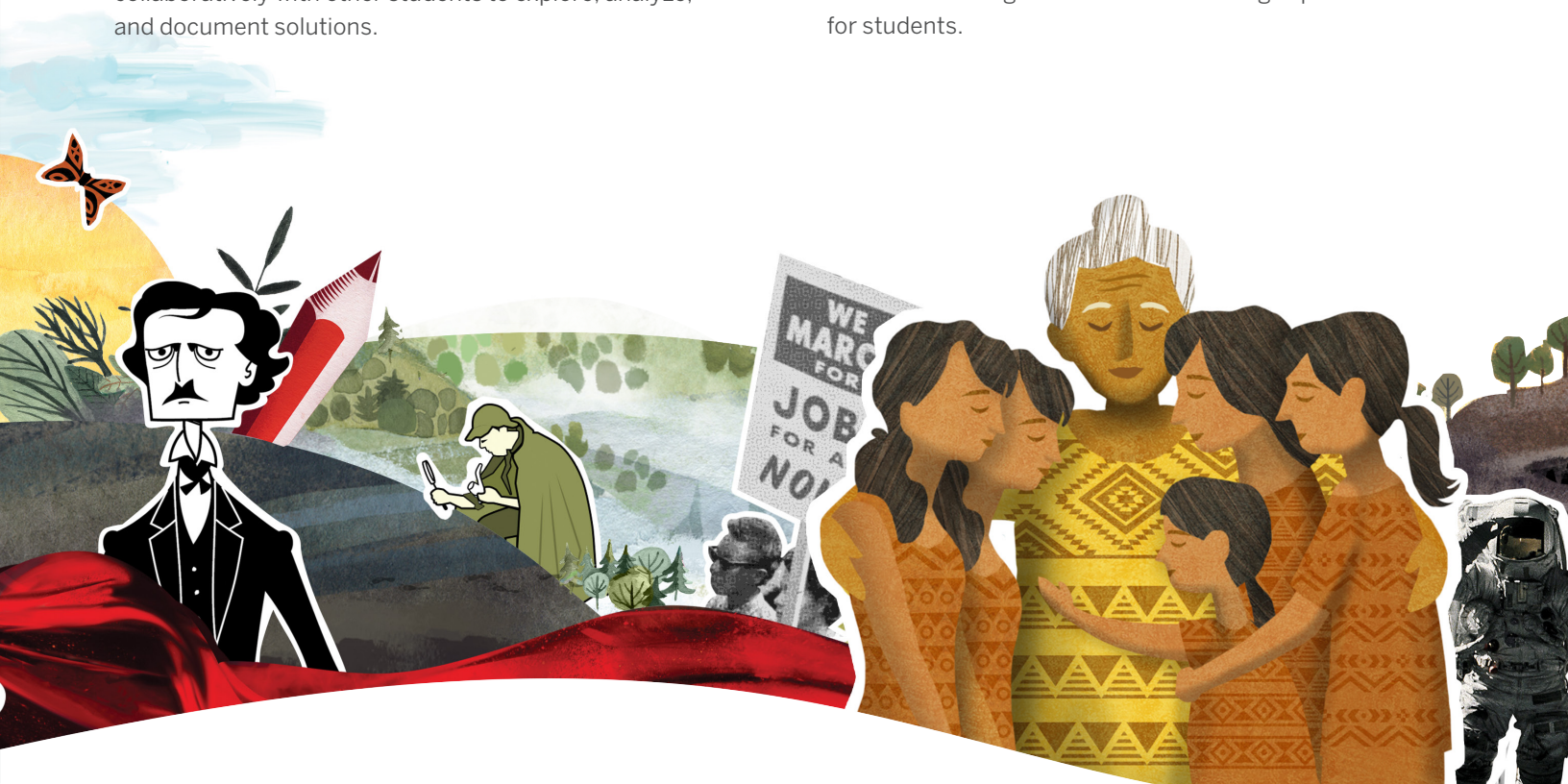


Student experience

Students learn to read complex fictional and informational texts closely, use textual evidence, and use reasoning deductively. Students work to build a well-organized argument by competing with or working collaboratively with other students to explore, analyze, and document solutions.

Teacher guide

Whether working pen and paper or working digitally, each Quest provides options for all classrooms. Teachers are provided with everything they need so that, even with little time for preparation, they can create an enticing and immersive learning experience for students.



For more information on Amplify
ELA, contact your Amplify
representative today.

(800) 823-1969
[amplify.com/ELA](https://www.amplify.com/ELA)



Amplify.