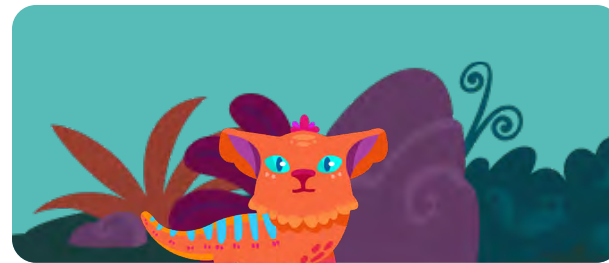
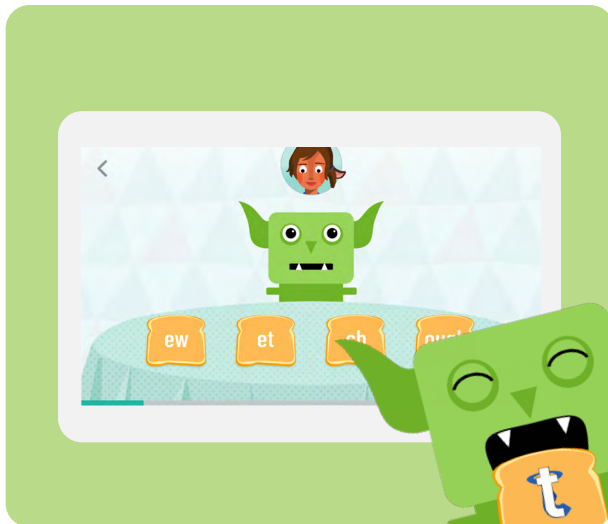
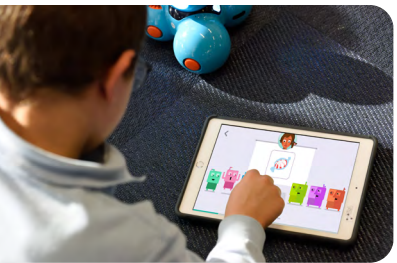


Reporting Guide





Welcome

Amplify Reading is a K–5 digital literacy program that helps reduce the stress of teaching as students return to the classroom and recover from instructional loss, re-engages students with captivating game-based learning, and provides families at home with insights into the most critical area of their child’s education—early reading.

Amplify Reading gives you actionable insights into your students’ reading development across 13 literacy skill domains. In this guide, you will find a wealth of information about the reports that Amplify Reading provides for everyone—from classroom teachers and literacy specialists, to principals and district leaders, to parents and caregivers at home. We strive to save you time, extend your reach, and deepen your understanding of your students through these valuable tools.

The program’s detailed, easy-to-use reporting helps inform instruction and identify opportunities for encouragement, celebration, and connection among teachers, students, and caregivers.





Table of contents

Classroom reports

Teacher Dashboard: Insights.....	8
Teacher Dashboard: Student Overview.....	9
Teacher Dashboard: Student Overview with mCLASS.....	10
Teacher Dashboard: Student Skill View.....	11

Individual student reports

Printable Caregiver Reports.....	14
Student Detail View.....	15

Reports for administrators

Administrator report.....	19
Progress and mastery.....	20
Performance, Growth, and Risk Reports.....	21



c

am

ar

Classroom reports

Amplify Reading’s classroom reports provide an at-a-glance overview of your students’ usage, progress, performance, and growth. You will receive high-level summaries and detailed reporting profiles that highlight meaningful next steps you can take with students to further support overcoming trouble spots and accelerating growth.

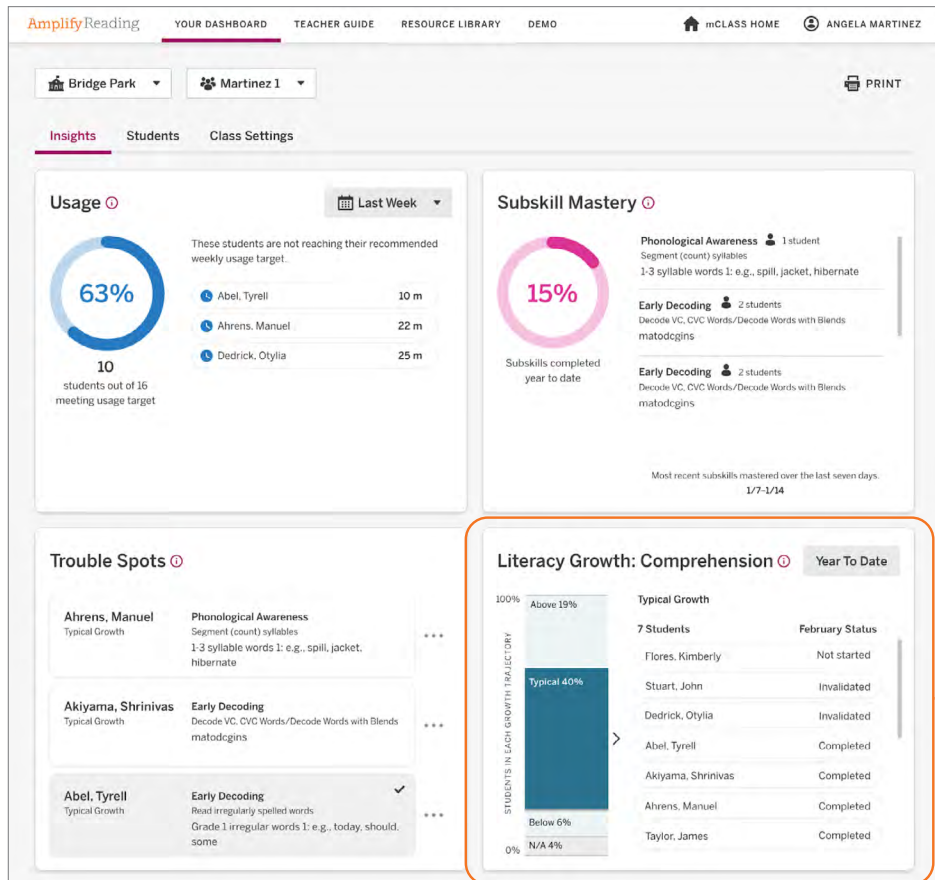
Insights.....	8
Teacher Dashboard: Student Overview.....	9
Teacher Dashboard: Student Overview with mCLASS.....	10
Teacher Dashboard: Student Skill View.....	11

Teacher Dashboard: Insights

Amplify Reading’s Insights View provides key trends and insights at a glance, allowing teachers to quickly see how students are progressing toward skill mastery and who needs support. Students who aren’t meeting minimum usage recommendations are elevated so teachers can reach out with encouragement.

EDUCATOR INSIGHT

“Which students do I need to check in with?”



Educators can see literacy growth for the whole class, powered by our monthly measurement, Skill Scan. Skill Scan for grades K-1 is coming soon!

Teacher Dashboard: Student Overview

The Students Overview features rich data on how each student is tracking towards their subskill mastery goals and usage targets, along with information about what quest they are on, and whether they have any active trouble spots.

EDUCATOR INSIGHT

“How are my students progressing through the program?”

STUDENT	USAGE	CURRENT QUEST	SKILL PROGRESS	TROUBLE SPOTS	PERFORMANCE	LITERACY GROWTH
	Last Week		Subskills Mastered Vs Target YTD			
Baldwin, Katie	5 m	4	10 / 23		Met Expectations	Above Typical
Bhattacharya, Samuel	10 m	P	14 / 23	1	Met Expectations	Typical
Abel, Tyrell	15 m	C	18 / 23 (+6)	1	Above Expectations	Well Above Typical
Dedrick, Otylia	12 m	3	14 / 23		Above Expectations	Typical
Abel, Tyrell	27 m	12	18 / 23 (+6)		Below Expectations	Well Above Typical
Dedrick, Otylia	10 m	3	14 / 23		Below Expectations	Typical
Abel, Tyrell	15 m	P	18 / 23 (+6)		Well Below Expectations	Well Above Typical
Dedrick, Otylia	25 m	3	14 / 23		Well Below Expectations	Typical

Educators can see growth, performance, and assessment metrics in one class list view.

Teacher Dashboard: Student Overview with mCLASS

In the Student Overview, Amplify Reading teachers using mCLASS® assessments will see data from mCLASS in their Teacher Dashboard.

EDUCATOR INSIGHT

“How can I connect my mCLASS assessment data to Amplify Reading’s instruction?”

STUDENT	mCLASS			AMPLIFY READING				
	DIBELS COMPOSITE	TRC READING LEVEL	TRO READING LEVEL	USAGE	CURRENT QUEST	SKILL PROGRESS	TROUBLE SPOTS	LITERACY GROWTH
				Last week		Subskills Mastered Vs Target YTD		
Baldwin, Katie	334 Benchmark	F C IND Proficient	Proficient	37 m	4	10 / 23		Above Typical
Bhattacharya, Samuel	310 Well Below	N A INS Well Below	Below Proficient	20 m	P	14 / 23	1	Typical
Abel, Tyrell	360 Above	F C IND Above	Proficient	50 m	C	18 / 23 (+6)	1	Well Above Typical
Dedrick, Otylia	327 Below	N A INS Below	Well Below Proficient	25 m	3	14 / 23		Typical
Abel, Tyrell	360 Above	F C IND Proficient	Above Proficient	47 m	12	18 / 23 (+6)		Well Above Typical
Dedrick, Otylia	327 Below	N A INS Well Below	Proficient	40 m	3	14 / 23		Typical

Easily navigate between the Amplify Reading and mCLASS programs.

Students' mCLASS benchmark scores can be used to sort your class list.

Teacher Dashboard: Student Skill View

The Teacher Dashboard Skill View within the Students tab provides an understanding of what content students are working on across the 13 skill domains in the program and at what grade level.

EDUCATOR INSIGHT

“For each skill domain, are my students working below, on, or above grade level?”

STUDENT	Phonological Awareness	Letter-Sound Correspondence	Letter Combinations	Early Decoding	Advanced Decoding	Comprehension Processes	Key Ideas & Details	Craft & Structure	Integration of Knowledge & Ideas	Fluency	Vocabulary	
Baldwin, Katie	On Grade	On Grade	Not Started	Below Grade	N/A	On Grade	On Grade	N/A	N/A	N/A	On Grade	Not Started
Bhattacharya, Samuel	On Grade	On Grade	Not Started	Below Grade	N/A	On Grade	On Grade	N/A	N/A	N/A	On Grade	On Grade
Abel, Tyrell	On Grade	Placed Out	On Grade	On Grade	N/A	On Grade	N/A	N/A	N/A	N/A	Not Started	Above Grade
Dedrick, Otylia	On Grade	Placed Out	Not Started	On Grade	N/A	On Grade	N/A	N/A	N/A	N/A	Not Started	Not Started
Akiyama, Shrinivas	Below Grade	Below Grade	N/A	Below Grade	N/A	N/A	Below Grade	N/A	N/A	N/A	On Grade	Below Grade
Ahrens, Manuel	Below Grade	Below Grade	N/A	Below Grade	N/A	N/A	Below Grade	N/A	N/A	N/A	On Grade	Below Grade
Douglass, Jamal	Below Grade	Below Grade	N/A	Below Grade	N/A	N/A	Below Grade	N/A	N/A	N/A	On Grade	Below Grade
Filipowski, Yochanan	On Grade	Placed Out	Not Started	On Grade	N/A	On Grade	N/A	N/A	N/A	N/A	Not Started	Not Started
Flores, Kimberly	Below Grade	Below Grade	Not Started	N/A	N/A	On Grade	N/A	N/A	N/A	N/A	On Grade	Below Grade

Quickly view the level of content your students are working on across all 13 skill domains in Amplify Reading.



Individual student reports

Amplify Reading's individual student reports show teachers and caregivers what each student's level of engagement with the program is and how they're performing and progressing towards their goals.


Printable Caregiver Reports.....	14
Student Detail View.....	15

Printable Caregiver Reports

Caregiver Reports allow caregivers to better understand their student's progress and provide insights on how they can support their student's instructional needs at home.

EDUCATOR INSIGHT

“How can caregivers understand and reinforce what their student is learning in the program?”



Ahrens, Manuel
Martinez - 1st Grade

AmplifyReading
10/15/2021

Daily Login Calendar

This calendar shows when Manuel has logged into Amplify Reading. Amplify Reading recommends at least 30-45 minutes a week, across 2-3 sessions of 15 minutes each.

October 2021

Su	Mo	Tu	We	Th	Fr	Sa
					1	2
3	4 15 m	5	6	7 17 m	8	9
10	11 5 m	12	13 20 m	14 21 m	15	16
17	18	19 ✓	20	21	22	23
24	25	26	27	28	29	30
31						

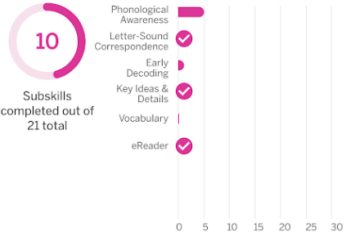
Progress this Year

Manuel has completed 10 subskills this year.

10

Subskills completed out of 21 total

- Phonological Awareness ✓
- Letter-Sound Correspondence ✓
- Early Decoding ✓
- Key Ideas & Details ✓
- Vocabulary |
- eReader ✓



Current Quest & Activities

Quest 4: Carrot is Lost!


The quest is the storyline that frames your student's Amplify Reading experience. All students in a class experience the same quest storylines as they progress through the program.

Oh no! Benita has lost her dog Carrot in the park. Can you and your Curioso help her find him?

You and your Curioso find a book on how to track animals and Benita uses it to find Carrot.


Activities and Skill Practice

Manuel receives activities appropriate to their reading level. The list below includes the skill games, eReader texts and interactive lessons from their current quest.




Gem & Nye In Progress

Words with single initial sounds e.g., top, goat



Text Reading Mastered

Grade K Book 4: A Dog Has a Nose



All Aboard! Trouble spot

1-3 syllable words 1: e.g., spill, jacket, hibernate

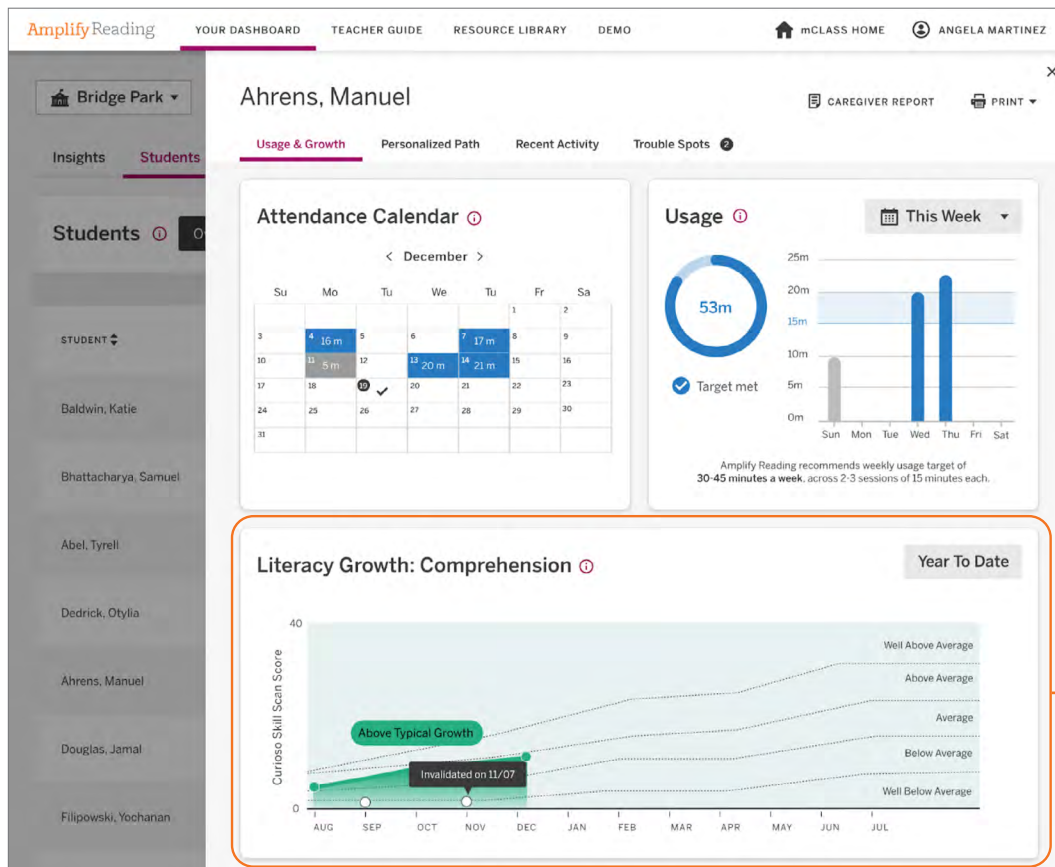
Caregiver Reports make Amplify Reading ideal for remote and hybrid learning by empowering caregivers to better understand their child's progress and support them at home. Teachers can easily email reports directly or print for students to take home. Caregiver reports are also available in Spanish.

Student Detail View

The Student Detail View will include information about a student's literacy growth in the program. Educators can see if students are making typical growth and how they compare to a national sample. Amplify Reading's practice games—the engaging storylines that drive the program's instructional lessons—and Attendance Calendar show teachers how often their students are using the program and what content they are currently working on.

EDUCATOR INSIGHT

“How is each student tracking towards their literacy goals?”



Understand each student's literacy growth and how they compare to a national sample.



Reports for administrators

Amplify Reading’s administrator reports provide insights into engagement, progress, and performance, giving you the data you need to make decisions at the school and/or district level.

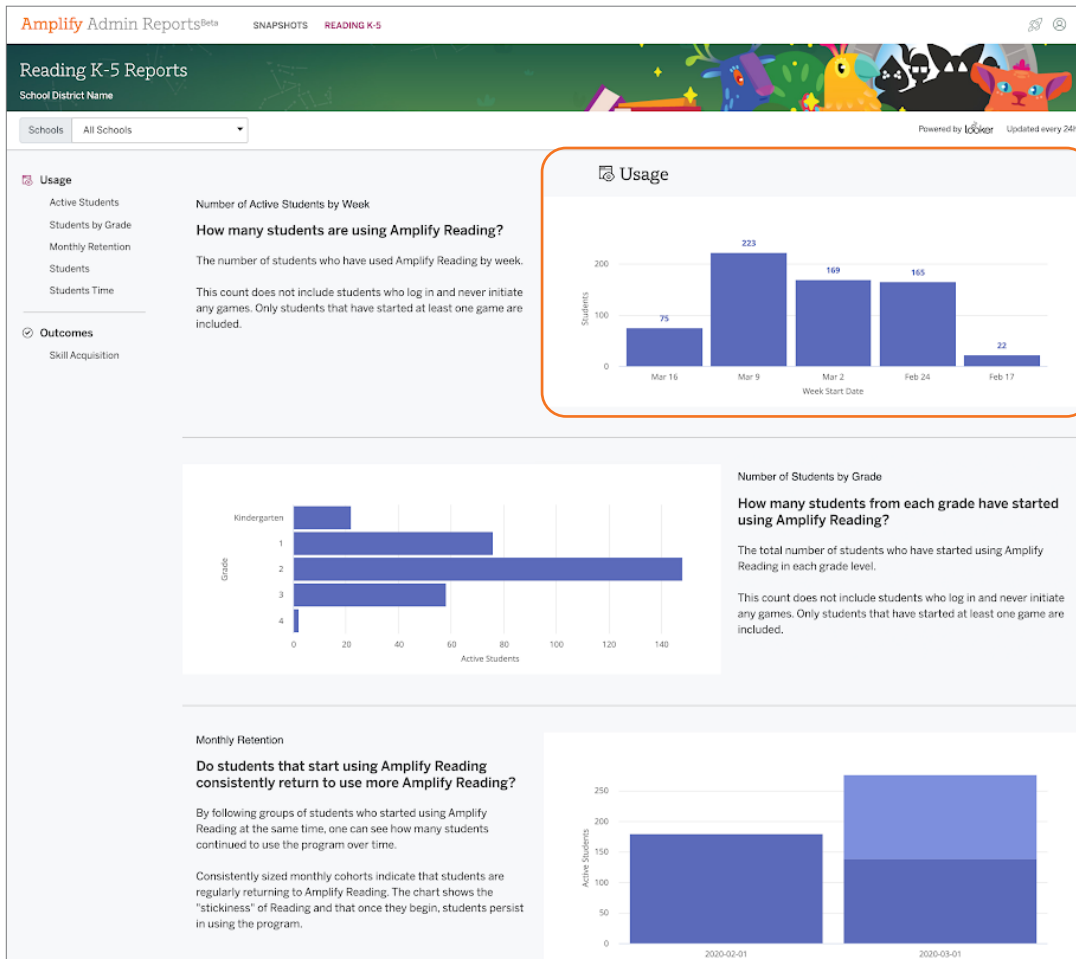
Administrator report.....	19
Progress and mastery.....	20
Performance, growth, and risk reports.....	21

Administrator report

Amplify Reading’s administrator report provides real-time, actionable student, class, and school usage and retention information.

EDUCATOR INSIGHT

“Are my schools and classes activated and engaged with Amplify Reading?”



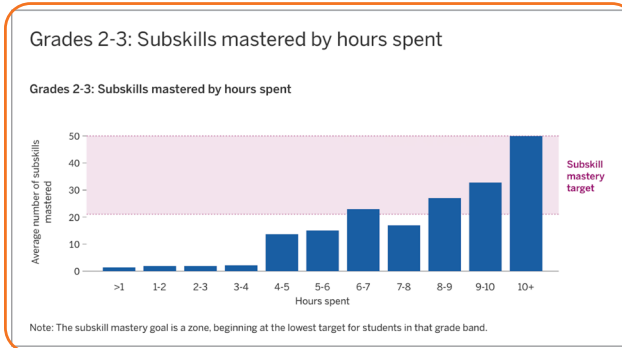
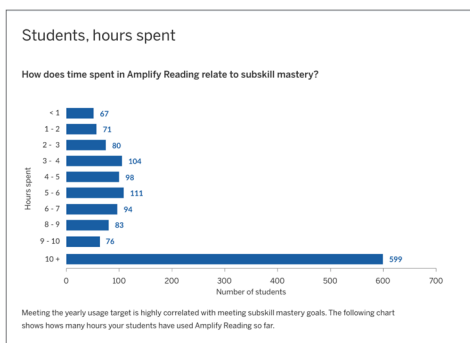
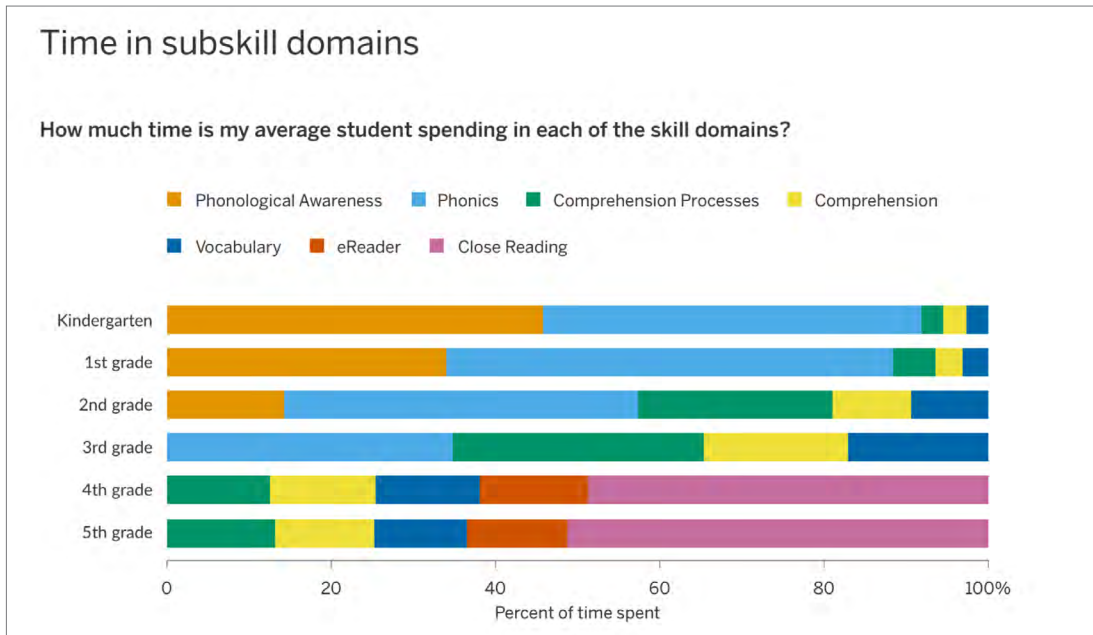
Track what student usage looks like month over month.

Progress and mastery

Amplify Reading provides progress insights, enabling administrators to celebrate as students, classes, schools, and districts reach their mastery goals.

EDUCATOR INSIGHT

“How are the students in my school or district progressing toward their mastery goals?”



Progress and mastery metrics are aggregated for administrators.

Performance, growth, and risk reports

Administrators will have access to aggregated literacy growth and risk data across classes, grades, and schools, enabling them to focus on which could benefit from extra attention.

EDUCATOR INSIGHT

“How are students growing across classes, grades, and/or schools?”

Growth report

For grades 2-5, comprehension and reading growth is assessed by a monthly maze passage called **Curioso Skill Scan**.

A student's first attempt at this assessment establishes a baseline from which a typical growth trajectory is charted based on a national sample of students with similar baselines. Growth trajectories map students' **actual** growth against **typical** growth.

All schools:

Growth Trajectory	Percentage
Above (≥ 66th percentile)	35%
Typical (34th - 65th percentile)	25%
Below (≤ 33rd percentile)	40%

Growth trajectories:

- Above:** ≥ 66th percentile
- Typical:** 34th - 65th percentile
- Below:** ≤ 33rd percentile

More information on how our growth data is calculated is available [here](#).

Growth breakdowns help administrators connect usage with growth and provide insights into which schools and classes may require additional resources.



What makes Amplify Reading different?

Amplify Reading uses captivating storylines to engage students in powerful individualized reading instruction and practice. Whether students are learning to read fluently or sharpening close reading skills, Amplify Reading accelerates their growth while freeing you up to work with small groups or individual students.





Personalized literacy journey

Students embark on personalized journeys that match their skill profiles to a comprehensive range of skills and subskills—from foundational skills, to comprehension, to close reading.



Skill transfer

Students go beyond acquiring skills in games by applying their hard-won skills to connected texts in our eReader. Amplify Reading's algorithm unlocks each book at the exact right point in a reader's development to deepen fluency, comprehension, and close reading skills through text.



Built on the Science of Reading

Amplify Reading is part of Amplify's greater early literacy ecosystem that provides research-based instruction proven to move the needle on reading growth. Extend and support core instruction using high-quality materials that provide more than just practice.



Proven growth

Amplify Reading works. Efficacy studies show significant growth for students using Amplify Reading.



Intrinsic motivation

Amplify Reading was developed with game designers, educators, students, and literacy researchers to create immersive narratives and engaging skill games that kids want to play.

For more information on Amplify Reading,
visit readingsuccess.amplify.com/elementary.

Amplify.

© 2021 Amplify Education, Inc. All trademarks and copyrights are the property of Amplify or its licensors.