

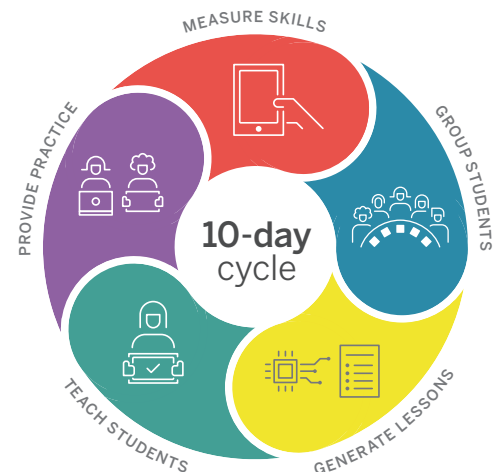


Get struggling K–5 readers back on track with Amplify Tutoring

Struggling students need targeted, adult-led intervention to catch up. Research has shown high-impact tutoring is one of most effective, scalable interventions w/ high and repeatable effect sizes. However, few educators have time to thoroughly analyze data and determine the specific skills each student needs to focus on. Even fewer have time to search for high-quality, tutor-friendly lessons aligned to those skills. mCLASS Intervention provides the analytical tools and resources educators need to make aligned, targeted tutoring a reality throughout the school year.

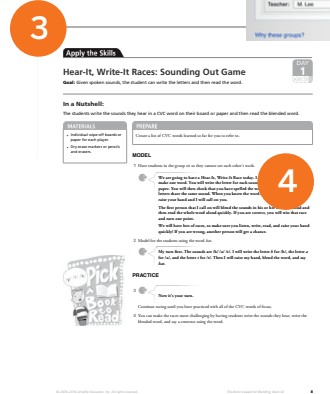
mCLASS Intervention follows a research-based skills progression and uses smart technology to:

- Analyze assessment results for each student.
- Form small groups of students with similar skill profiles, determine the optimal instructional focus for each group, and build detailed lessons aligned to that focus.
- Update students' skill profiles, groups, and lessons every ten lessons as progress-monitoring results improve.

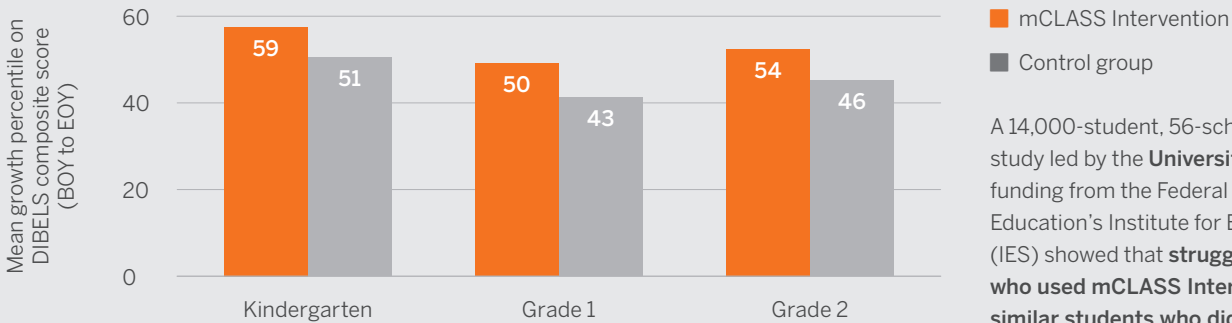


What's included:

1. Powerful software algorithm that analyzes data and **groups students** based on where they are in the reading skills progression
2. A bank of **over 4,000 research-backed activities**, including multi-sensory activities that use auditory, visual, tactile, and kinesthetic techniques
3. Lesson builder that **automatically assembles activities** into tutor-friendly, detailed lessons that target the skills each group is ready to learn
4. Digital card app to **streamline lesson prep** for in-person or virtual tutoring. Physical kit materials are available if desired.
5. Standardized diagnostic probes for **progress monitoring**
6. Analytical reporting to see students' progress throughout the year
7. Embedded **training modules** and a **pedagogical help desk** for teachers and tutors to get started and maximize your students' success



Growth differences by grade level



A 14,000-student, 56-school nationwide study led by the **University of Michigan** with funding from the Federal Department of Education's Institute for Education Sciences (IES) showed that **struggling K–2 readers who used mCLASS Intervention outgrew similar students who did not.**

Let us help you make tutoring a reality in your school. Pre-register here through TEA and email texas@amplify.com to learn more.

Amplify.