

# The Amplify Science Newsletter

---



We hope you found rest and refreshment this summer and feel excitement about this school year. Back-to-school season is a busy time, and you probably have a lot on your mind.

As your partner in education, we want you to know that Amplify is here to help. Have you checked out our NYC Getting Started guide on the NYC Resources Site? We designed it with you in mind—it includes resources to help you access and use the platform, details on curriculum materials, student and caregiver support, answers to frequently asked questions, and more.

Also, you can now find details on our upcoming webinar series, [Back to Basics: Getting started with Amplify Science](#). Be sure to register today! We hope this information will be valuable to you in the weeks and months ahead. Watch for lots more to come on [start.amplify.com](http://start.amplify.com).

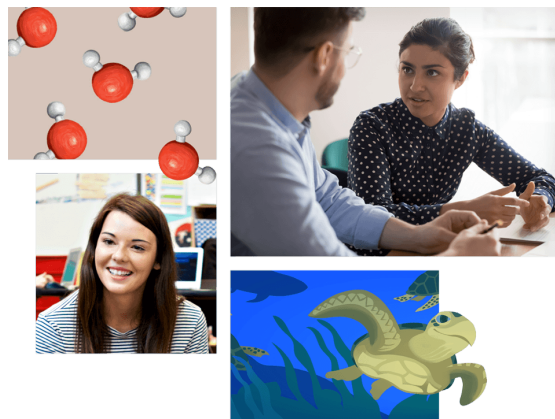
Here's a fun and interactive way for you to welcome your students back to school in style! Just [download this fun and interactive card](#) for your students to fill out as they return for the school year!

## Calendar

---

### Back to Basics: Getting Started with Amplify Science

[Sign up now](#) to join Amplify experts on a three-part series covering the key things you need to know to get started or freshen up your Science skills. Each session will include a time for Q&A and all attendees will receive a checklist of activities related to what you learned in the session.



### Amplify Science K–5 sessions

101: Tuesday, Sept. 21

201: Tuesday, Oct. 5

301: Tuesday, Oct. 19

### Amplify Science 6–8 sessions

101: Wednesday, Sept. 22

201: Wednesday, Oct. 6

301: Wednesday, Oct. 20

[Register today!](#)

## Boosting Science for Back-to-School to Support Deep Learning and Engagement

Join Rebecca Abbott from UC Berkeley's Lawrence Hall of Science to explore how phenomena-based science instruction can ensure deep learning and engagement for all students, as well as accelerate learning for those most impacted by the learning disruptions of the past year. All attendees will receive CE credit!

[Register now](#)

Did you miss our Embedded Immersive and Engineering webinar with Rebecca Abbott of UC Berkeley's Lawrence Hall of Science? You can [access the recording here](#) and still get CE credits!

---

## Spotlight



Kelly Coombe  
Chico Unified School District, CA

"Kelly is not only a celebrated teacher but also a respected leader within the district. She inspires her students to think and act like scientists, and creates an environment of excitement every day! Kelly is always willing to lend a hand to her colleagues, whether strategizing lesson plans or coordinating curriculum reviews. Kelly's enthusiasm is contagious, and she consistently goes the extra mile both in and out of the classroom. She is a joy to work with!

— Kim Scott, Amplify

**Do you know an Amplify educator who deserves some recognition?**

*Each featured educator will receive a special gift from us.*

[Submit a nomination!](#)

---

## Advice and answers

### Always improving!

Have you heard about the improvements, new features, and additional options we've added to Amplify Science for teachers and students? [Explore what's new](#) for the 2021–2022 school year, including:

- [Receive an alert](#) each time students hand in or resubmit activities in Classwork.

- New [Coral Restoration Coding Science Internship](#) for grades 6–8.

There's even a [collection of articles](#) devoted to all things Amplify Science.

---

## Let's connect

Our [Amplify Science Facebook group](#) is a community of Science educators from across the country. In this space we share best practices, ideas, and support on everything from implementation to instruction.

Join today and get connected. Who knows, you might have an opportunity to get in on some giveaways! We recently asked what book(s) are on your summer reading list and Jamie Phillips was our contest winner!

**JOIN US** >

Congrats to Jamie Phillips! You are the winner of our "Meet a Member Monday" contest.

Jamie is currently reading *The Flat World* and *Education* by Linda Darling Hammond. What are you reading? 📖



MEDIA1.GIPHY.COM

👍❤️ 10

---

Amplify.

[Facebook](#)  
[Instagram](#)  
[Twitter](#)  
[LinkedIn](#)  
[YouTube](#)