

# Professional Development Planning Guide

Professional development is the backbone of strong implementation, and Amplify welcomes the opportunity to partner with you to design a professional development plan that meets your needs. This planning guide will support you in selecting:

- just-right sessions for your teachers and leaders
- appropriate delivery methods and durations

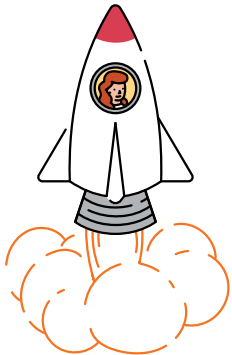


## Supporting success

Professional development will set your teachers and leaders up for success. Our interactive sessions will help you **launch, strengthen, and coach** teachers and leaders to implement the program with ease and provide students with an impactful experience.

### LAUNCH

Beginning of the year

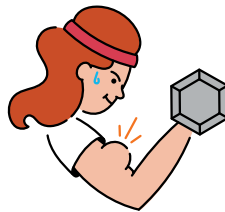


Propel into the new school year with sessions that introduce you to your Amplify program and support you in a strong implementation.

Before teaching

### STRENGTHEN

Mid-year, end of the year



Boost implementation with sessions that target specific instructional practices.

After 6+ weeks of teaching

### COACH

Mid-year, end of the year



Guide teachers and leaders with targeted learning tailored to their specific needs.

## Flexible delivery options

Amplify is prepared with session options that fit your time, budget, and preferences.



#### Onsite support

In person, up to 30 participants



#### Remote support

Live webinar, up to 30 participants



#### Online course

Self-paced



## Recommended sessions for teachers and leaders

Below you will find a recommended professional development plan for Amplify Texas Spanish Edition (SLAR). Learn more about the goals for each session by visiting [Amplify Texas Spanish Edition professional development](#).

### Key



Recommended sessions



Recommended sessions for teachers



Recommended sessions for leaders

### LAUNCH

★ Amplify Texas Lectoescritura (digital) and SLAR (print) initial training

Full day  

2 half days  

Half day   

Half day  


Select the training grade level(s):

Grades K–2

Grades 3–5

### STRENGTHEN

★ Amplify Texas SLAR strengthening session\*

Half day  

3 1-hour sessions  

\* Choose topics based on school needs. [See the full list of other topic-based strengthen offerings in our professional development catalog.](#)

Select the training grade level(s):

Grades K–2

Grades 3–5

### COACH

★ Amplify Texas SLAR coaching session

2 full days   

Full day   

## Next steps

Ready to lock-in your dates? Want to learn more about developing a professional development plan to meet your needs? Contact your account executive to put this plan into action.

To learn more about Amplify's professional development services, visit [Amplify professional development](#).

Amplify.