

# Professional Development Planning Guide

Professional development is the backbone of strong implementation, and Amplify welcomes the opportunity to partner with you to design a professional development plan that meets your needs. This planning guide will support you in selecting:

- just-right sessions for your teachers and leaders
- appropriate delivery methods and durations

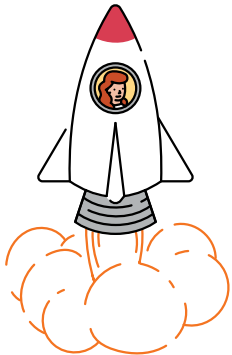


## Supporting success

Professional development will set your teachers and leaders up for success. Our interactive sessions will help you **launch, strengthen, and coach** teachers and leaders to implement the program with ease and provide students with an impactful experience.

### LAUNCH

Beginning of the year

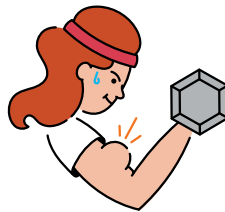


Propel into the new school year with sessions that introduce you to your Amplify program and support you in a strong implementation.

Before teaching

### STRENGTHEN

Mid-year, end of the year



Boost implementation with sessions that target specific instructional practices.

After 6+ weeks of teaching

### COACH

Mid-year, end of the year



Guide teachers and leaders with targeted learning tailored to their specific needs.

## Flexible delivery options

Amplify is prepared with session options that fit your time, budget, and preferences.



#### Onsite support

In person, up to 30 participants



#### Remote support

Live webinar, up to 30 participants



#### Online course

Self-paced



## Recommended sessions for teachers and leaders

Below you will find a recommended professional development plan for mCLASS® Texas Edition. Learn more about the goals for each session by visiting [mCLASS Texas Edition professional development](#).

### Key



Recommended sessions



Recommended sessions for teachers



Recommended sessions for leaders

### LAUNCH

#### ★ Initial training

2 half days  

Full day  

Half day  

#### ★ Initial training online course

Self-paced  

### STRENGTHEN

#### ★ Classroom data analysis and instructional planning

Full day  

#### Strengthening consultation session package

3 1-hour sessions  

#### ★ Data-driven leadership practices

Full day  

### COACH

#### ★ Coaching session

Full day   

Half day    

## Next steps

Ready to lock-in your dates? Want to learn more about developing a professional development plan to meet your needs? Contact your account executive to put this plan into action.

To learn more about Amplify's professional development services, visit [Amplify professional development](#).

Amplify.