

The  
**Amplify** Science  
Newsletter

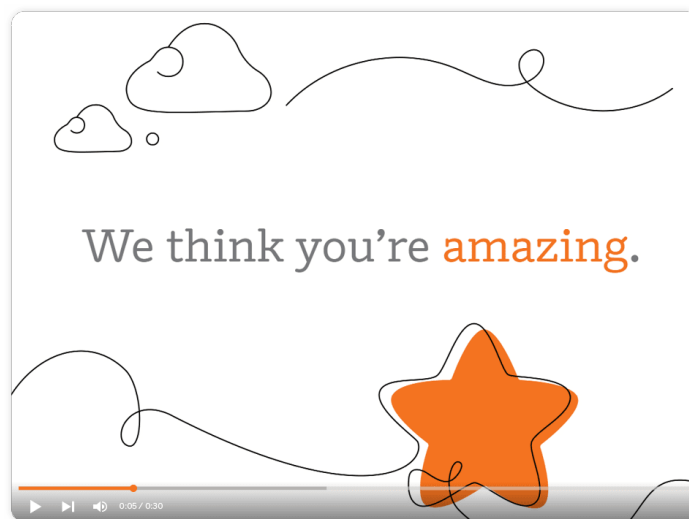
---



CELEBRATING  
**Asian American  
& Pacific Islander**  
HERITAGE MONTH



In addition to observing Asian American & Pacific Islander Heritage Month this May, we're also continuing the celebration of Teacher Appreciation Month! We don't think a week is enough time to say how much we appreciate you and all that you've done this school year. Check out [start.amplify.com](https://start.amplify.com) to access and enjoy the downloadable cards and virtual stickers (under the Bonus tab) that recognize your valuable work. And congratulations to all of our giveaway winners! Review the daily tabs to see if you or someone you know was selected to win one of the many prizes we were giving away earlier this month.



Do you have tips you'd like us or your fellow educators to know? [Submit your teacher tips here](#) and we'll send you a small gift to thank you! Stay tuned each month in upcoming newsletters and our Facebook groups to see if your tip is featured.

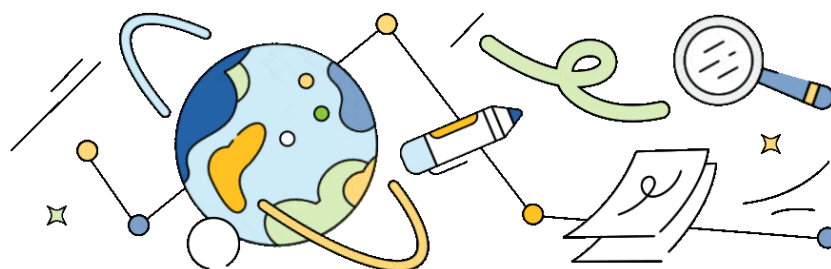
## Announcements

### We want to hear from you!

Amplify is committed to continuous improvement. Can we have less than ten minutes of your time to complete this survey regarding your experience with Amplify? [Take the survey.](#)

### Curious about what's in store for next school year?

Just in case you missed it: visit our [Coming Soon site](#), then select your program to see what's new!



# SCIENCE CONNECTIONS

From the science classroom. For the science classroom.

### Science Connections: The Podcast

Join host Eric Cross as he sits down with middle school science teacher and illustrator Valeria Rodriguez to discuss ways students can develop analytical skills within the science classroom. Visit [the podcast site](#) to listen to this episode (or catch up on previous episodes).

---

## Calendar



### Back by popular demand: Back to Basics series

At the end of the summer, we'll host a three-part series offering a fresh look at the Amplify Science fundamentals. As you return to school, our Amplify experts will walk you through the key things you need to know to start your year successfully. More details coming soon—stay tuned!

---

## Spotlight



### Heidi Jenkins

Hawaii Department of Education,  
Hana-Lahainaluna-Lanai-Molokai Complex Area, Hawaii

“As a Complex Area STEM resource teacher, I have the amazing opportunity to collaborate with and learn from colleagues across Hawaii through Amplify Science K–8 implementation. Being a part of several professional learning teams has helped me to build partnerships and bridge training opportunities for our teachers in science, math, and computer science.”

### We want to spotlight you next!

*Each featured educator will receive a special gift from us.*

[Submit a nomination!](#)

## Advice and answers

---



### TEACHER TIP

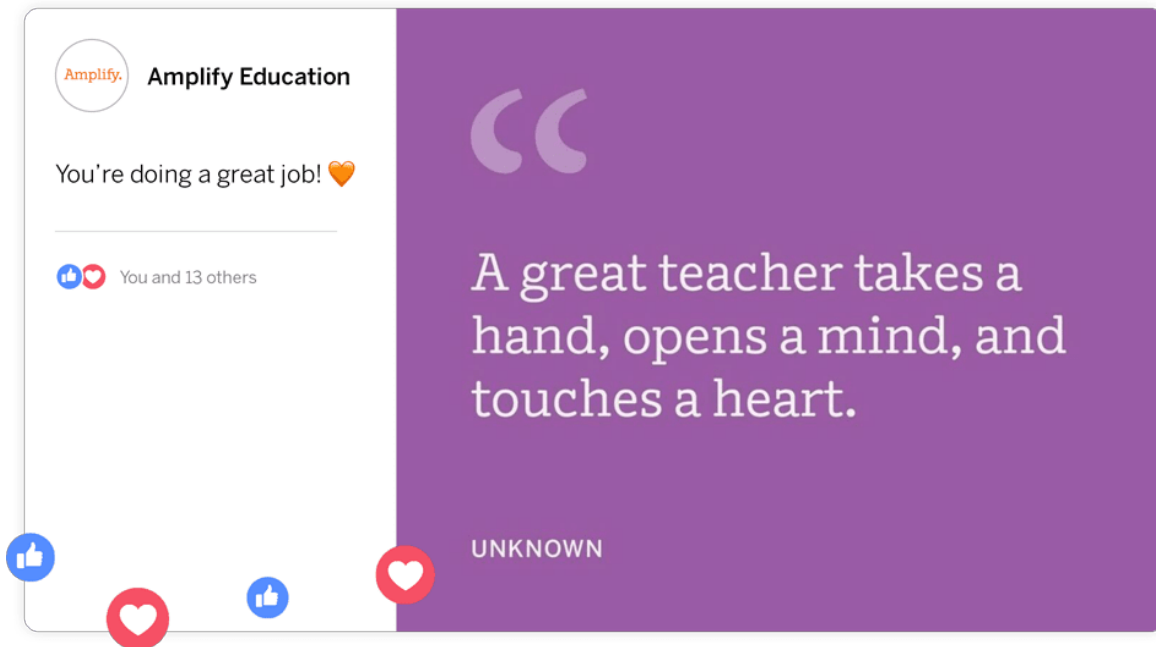
#### Insight from an Amplify Ambassador

Want to hear from a fellow educator? Nikki Ojanen is an Amplify Ambassador and instructional coach. She shared the following reminder: “Trust the kids. They can do hard things! When you let go of thinking that you have to have all the answers and plan everything out that you are going to do every minute, you limit the vast knowledge that they can bring into the classroom. Kids are neat!”

[\*\*MEET OUR CURRENT AMPLIFY AMBASSADORS >\*\*](#)

## Let's connect

---



Thank you for being a great teacher! We invite you to join other great educators on Facebook in our [Amplify Science community](#). This is the perfect place to connect with other Amplify teachers from across the country to support each other, share creative ideas and helpful tips, and be social!

---

Amplify.

[Facebook](#)  
[Instagram](#)  
[Twitter](#)  
[LinkedIn](#)  
[YouTube](#)