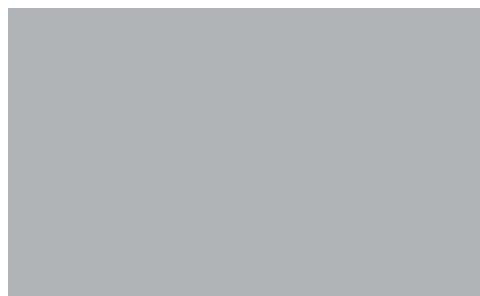
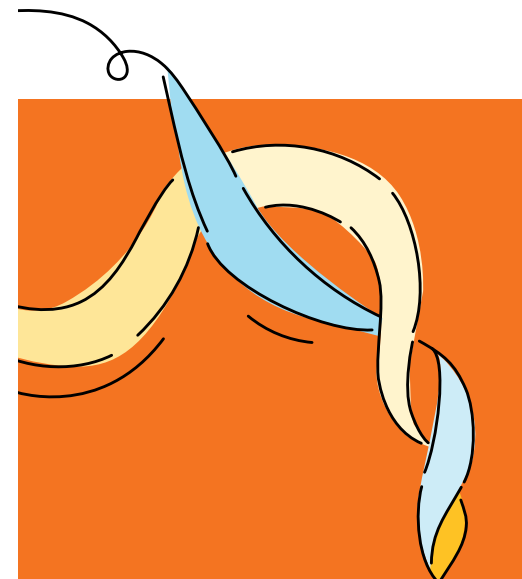
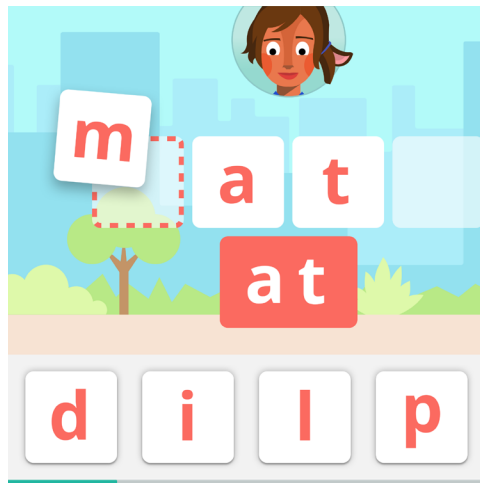


# Early literacy suite

Science of Reading-based literacy system  
to support every student





Dear educator,

You work hard to give your students the best—and you know they'll need everything you've got to set them up for success.

You and your students deserve resources that are grounded in the latest research and designed to work together so your students can be exponentially successful—resources that are already changing lives nationwide.

We'd like to help.

The growing body of evidence around the Science of Reading tells us that with the explicit, systematic instruction, all students can learn to read at or near grade level.

Amplify's been turning that science into great literacy instruction for two decades. And through our Science of Reading podcast and free professional development events, we're constantly working with the best experts in the field to make our programs even better—and to share the latest insights with teachers, because we believe the Science of Reading is for everyone.

Thinking of you,

Susan Lambert  
Chief Academic Officer,  
Elementary Humanities, Amplify



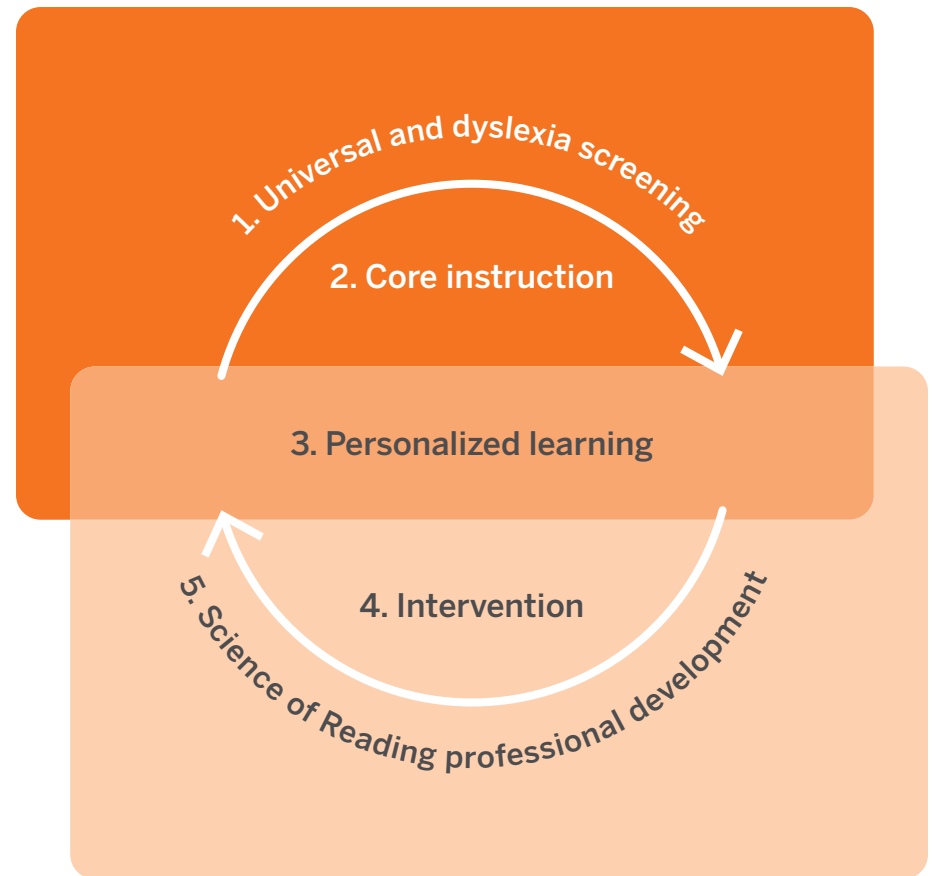
# Table of contents

Introduction .....	4
Five elements of a Science of Reading suite .....	5
Amplify’s early literacy suite .....	6
Comprehensive system in action .....	8
Assess with mCLASS® Assessment Suite .....	10
Instruct with Amplify CKLA® .....	12
Personalize with Amplify Reading.....	14
Intervene with mCLASS® Intervention.....	16
Setting up your literacy suite.....	18
Professional development and training resources.....	20

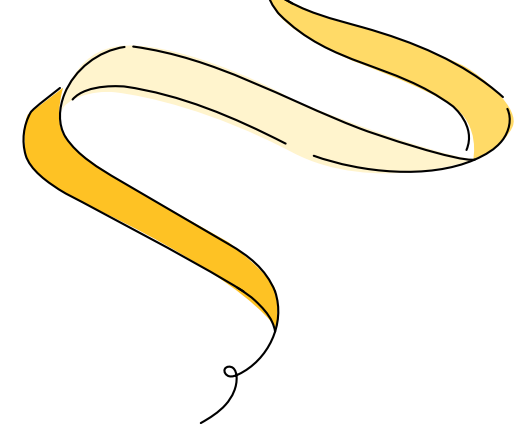


# Meet the needs of all students with a complete Science of Reading system.

Strong core instruction grounded in Science of Reading principles is crucial—but in isolation, even that’s not enough. To be powerful and effective, a literacy system needs to bring together assessment, curriculum, intervention, personalized learning, and ongoing professional development.







## The five critical elements of a Science of Reading system

An effective early literacy system aligns these five key components around the principles of the Science of Reading so that each element of the system shares a research-based foundation and works to meet the needs of all students. This approach supports Multi-Tiered Systems of Support (MTSS) and Response to Intervention (RTI) models.

### 1 Universal and dyslexia screening

Assessment should include universal screening, dyslexia screening, and progress monitoring to identify students at risk with actionable data and align instruction to areas of greatest need.

### 2 Core instruction

A high-quality core program includes explicit, systematic instruction in foundational skills and a coherent approach to building background knowledge and vocabulary.

### 3 Personalized learning

Effective personalized learning programs support both remediation and acceleration. They reinforce core instruction or can serve as a supplement to provide teachers with a first taste of the research-based instructional tools.

### 4 Intervention

Intervention should be staff-led and data-driven, with students' needs clearly identified and frequently monitored.

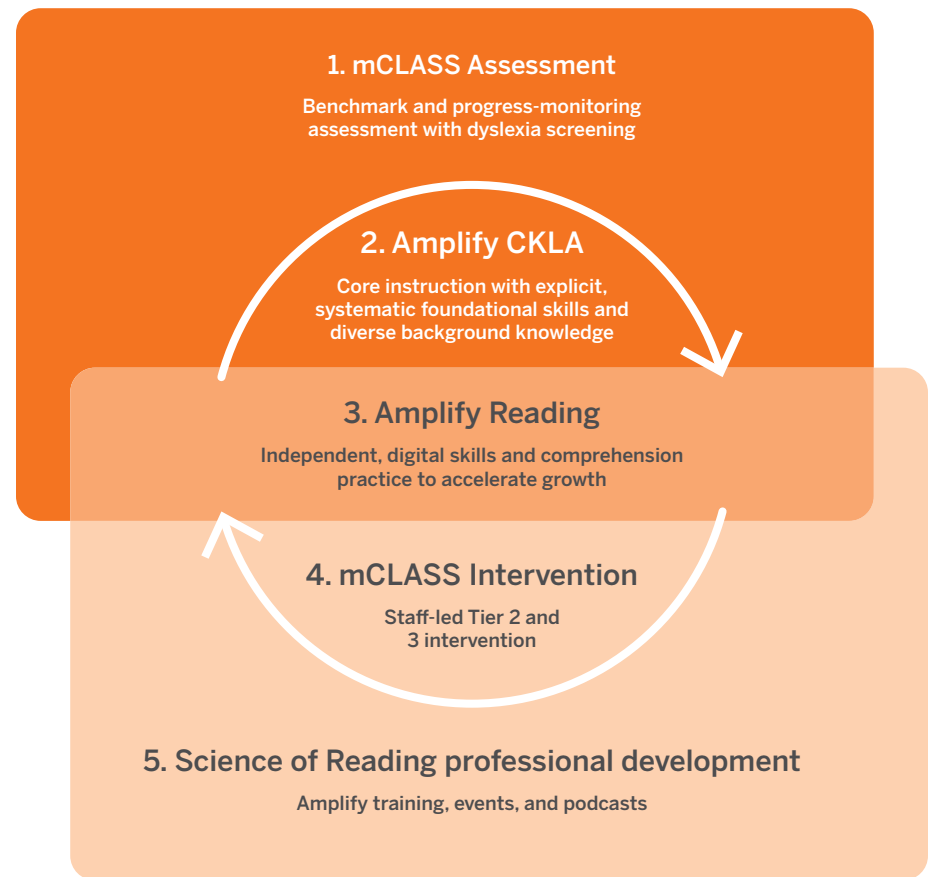
### 5 Science of Reading professional development

Districts across the country are making the shift to the Science of Reading. As you evaluate where to start, begin by sharing and cultivating a learning community among colleagues. The more knowledge you gain, the easier it will be to identify which areas to prioritize.

# Amplify's early literacy suite built on the Science of Reading

Amplify has combined these crucial elements in an early literacy suite of curriculum, assessment, intervention, and personalized learning. Our programs ensure that all educators have what they need to support every student within an aligned system based on research and effective practices.

Amplify's early literacy suite is based on 20 years of experience with the Science of Reading. The assessment and intervention power of mCLASS®, the core instruction of Amplify CKLA®, and the personalized learning of Amplify Reading come together in a complete system that saves you time and aligns your literacy practices.



1

### Universal and dyslexia screening

#### mCLASS® assessment suite powered by DIBELS® 8th Edition

mCLASS's gold-standard universal and dyslexia screening suite is built on decades of predictive research. The only digital provider of DIBELS 8th Edition, mCLASS instantly analyzes students' results while maintaining a one-on-one teacher-administered model.

2

### Core instruction

#### Amplify Core Knowledge Language Arts® (CKLA®)

Amplify CKLA® combines explicit, systematic foundational skills instruction with a focus on building deep background knowledge and vocabulary. This dual focus supports greater reading comprehension and sparks curiosity.

3

### Personalized learning

#### Amplify Reading

Amplify Reading gives every student practice and extension opportunities within an adaptive and immersive game world that motivates them to discover the joy of reading. It spans comprehension, phonics, vocabulary, and other key skills.

4

### Intervention

#### mCLASS Intervention

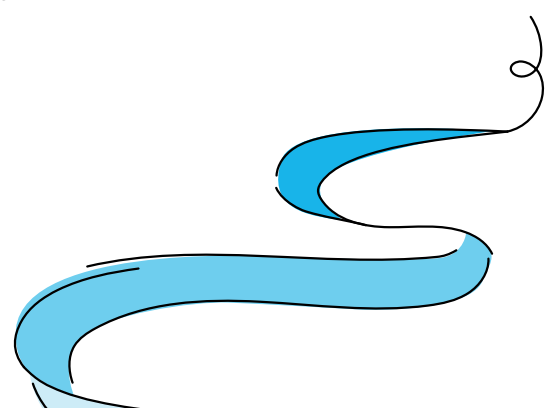
mCLASS Intervention helps make effective staff-led Tier 2 and 3 intervention a reality. It analyzes students' data to provide you with easy-to-use 30-minute lesson plans for small groups outside of core instructional time based on instructional need. The clearly structured lessons can be delivered by educators of varying experience and roles.

5

### Science of Reading professional development

#### Amplify training, events, and podcasts

Our complimentary webinars, events, podcasts, and communities help tens of thousands of educators make the shift each year. In addition, expert training helps you implement the full literacy suite with confidence.



# Comprehensive system in action

Amplify's early literacy suite is a family of programs that are all built on the Science of Reading and connect with one another.

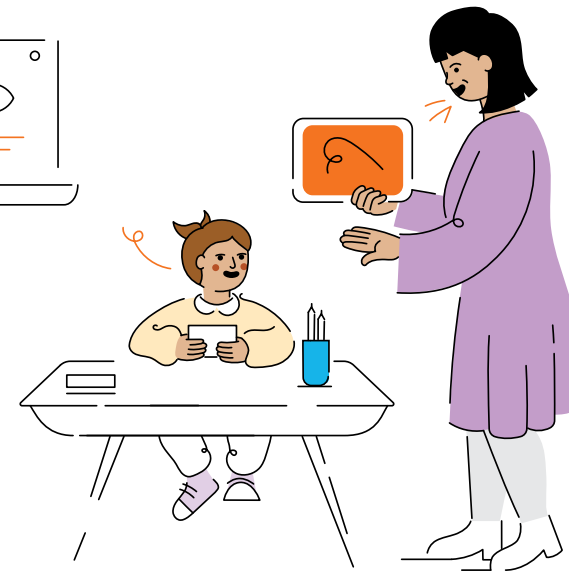
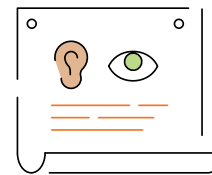
## What makes Amplify's early literacy suite powerful?

1. It is a cohesive literacy solution to support MTSS and RTI.
2. Aligned resources do away with the need for piecemealing.
3. Data drives next steps for whole group, small group, and individual students.

TIER 1 2 3

### Assess: mCLASS

- Universal and dyslexia screening
- Targeted, teacher-led instruction
- Ongoing progress monitoring



Data is used to inform instructional needs

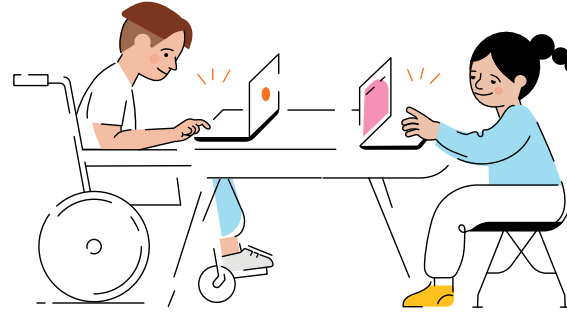


TIER 1 2 3

### Instruct: Amplify CKLA

- Builds strong foundational skills
- Develops background knowledge and vocabulary
- Boosts engagement with rich and diverse content

All students placed into personalized learning

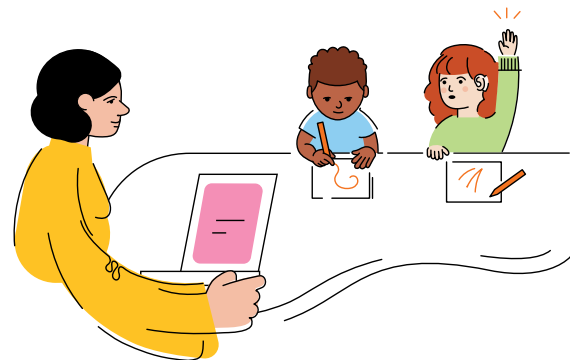


TIER 1 2 3

### Practice: Amplify Reading

- Personalized remediation and enrichment makes learning to read fun
- mCLASS data informs student placement
- Differentiated practice reinforces and strengthens Amplify CKLA instruction

Students at risk are placed into intervention



TIER 1 2 3

### Intervene: mCLASS Intervention

- Targeted, staff-led intervention
- Places students into small groups seamlessly using mCLASS data
- Can be delivered by classroom teachers, interventionists, tutors or paraprofessionals

# mCLASS Assessment Suite

Powered by DIBELS 8th Edition, the mCLASS assessment suite provides universal screening, dyslexia screening, and progress monitoring in one tool.



## Efficient and precise one-minute measures

DIBELS 8th Edition's predictive assessments of phonemic awareness, phonics, fluency, vocabulary, and comprehension are proven to identify risk at the earliest levels.

## Critical skills measured through direct observation

When assessing early literacy skills, it's critical to hear students produce sounds and words. With mCLASS, you get valid and reliable data through one-on-one assessment between the teacher and student.

## Instant scoring and granular instructional data

mCLASS instantly scores and analyzes student response patterns, giving you instructional data at the sub-skill level and clear areas of focus for each student and small group.

## How mCLASS assessment harmonizes with the Amplify early literacy suite:



### Core Instruction Amplify CKLA

mCLASS data informs instructional needs and identifies whole-class and small-group areas of focus. It also places students into groups based on need.

#### How it works

- Amplify CKLA's benchmark assessments in Grades K–2 can be replaced by mCLASS.
- The CKLA Connect feature in mCLASS identifies appropriate Amplify CKLA instruction for each small group.



### Personalized Learning Amplify Reading

Students practice independently in targeted skill areas that mCLASS identifies.

#### How it works

- mCLASS data automatically place students in the appropriate starting point in Amplify Reading.
- Side-by-side data from Amplify Reading and mCLASS helps you track growth in real time.



### Intervention mCLASS Intervention

mCLASS assessment identifies risk at the earliest levels, automatically placing students into groups within mCLASS Intervention, allowing you to quickly intervene.

#### How it works

- mCLASS data place students in and out of mCLASS Intervention.
- mCLASS Intervention uses mCLASS benchmark and progress monitoring data to create intervention groups and daily lesson plans for 10-day cycles.

# Amplify Core Knowledge Language Arts (CKLA)

A research-based core curriculum, Amplify Core Knowledge Language Arts (CKLA) builds lasting comprehension through explicit, systematic foundational skills instruction and an intentional sequence of rich content topics in history, science, literature, and the arts.



## Knowledge builds on knowledge

Amplify CKLA's rich topics build upon each other coherently across subjects and grades, helping students develop a lasting foundation of background knowledge and vocabulary.

## Explicit, systematic foundational skills instruction

Students move from explicit instruction to independent practice through a proven sequence that quickly gets them practicing with dynamic decodable texts. An explicit and multisensory approach helps students build automaticity to become confident readers.

## Supports for all learners

Easy-to-use Teacher Guides include point-of-use scaffolds to differentiate instruction for all learners. It includes English Language Learner supports and an authentic Spanish literacy companion to help you put the Science of Reading into practice in every classroom.



## How Amplify CKLA core curriculum harmonizes with the Amplify early literacy suite:



### Assessment mCLASS Assessment

Amplify CKLA provides strong core instruction in the same critical literacy skills measured in mCLASS, helping align your assessment and core instruction.

#### How it works

- mCLASS can replace Amplify CKLA's benchmark assessments in Grades K–2.
- The CKLA Connect feature in mCLASS identifies appropriate Amplify CKLA lessons for each small group to support differentiated instruction.



### Personalized Learning Amplify Reading

Students extend their learning from Amplify CKLA through personalized instruction and practice in Amplify Reading.

#### How it works

- Students receive just-right instruction aligned to CKLA's foundational skills scope and sequence.
- A focus on comprehension processes complements Amplify CKLA's knowledge-building approach.



### Intervention mCLASS Intervention

mCLASS Intervention allows you to intervene right away to get struggling readers back on track.

#### How it works

- Explicit, multisensory lesson plans extend the strategies employed in Amplify CKLA.
- A focus on phonological awareness and phonics complements Amplify CKLA's Skills Strand.

# Amplify Reading

Grounded in the Science of Reading, Amplify Reading is a personalized learning program that enriches and remediates learning through a next-generation gameplay design. It supports core instruction in Amplify CKLA and leverages mCLASS with DIBELS 8th Edition data for placement.



## Extensive practice along Scarborough's Reading Rope<sup>1</sup>

Amplify Reading is designed to complement core instruction, with targeted, explicit, systematic foundational skills practice and a unique focus on comprehension processes like inference and morphology.

## Immersive games that make reading rewarding

Leveraging the science behind engagement, Amplify Reading delivers compelling narratives with dynamic gameplay that keeps students coming back for more. Relevant storylines and interactive game design boost confidence and encourage students to value effort.

## Embedded progress monitoring with growth reports

Teachers receive actionable insights into their students' reading development across key literacy skill domains, with growth reports at the classroom, school, district and caregiver levels.

1. Scarborough, H. S. (2001). Connecting early language and literacy to later reading (dis)abilities: Evidence, theory, and practice. In S. Neuman & D. Dickinson (Eds.), Handbook for research in early literacy (pp. 97–110). New York, NY: Guilford Press

## How Amplify Reading personalized learning harmonizes with the Amplify early literacy suite:



### Assessment mCLASS Assessment

mCLASS's measures are predictive of long-term reading success. With Amplify Reading, students receive direct practice in the key skills needed to grow in mCLASS benchmarks.

#### How it works

- mCLASS data places each student at the appropriate starting point in Amplify Reading.
- In between benchmark periods, Amplify Reading provides data on how students are progressing and where they can use additional support.



### Core Instruction Amplify CKLA

Amplify CKLA provides strong Tier 1 core instruction for all students. Together with Amplify Reading, all students receive extensive practice in the concepts learned in core instruction.

#### How it works

- Amplify Reading provides students with a personalized digital approach to targeted skills practice along a scope and sequence aligned to Amplify CKLA's core instruction.
- Amplify Reading provides real-time growth data with no additional assessment, allowing teachers to pinpoint skills in core instruction where students need more support.



### Intervention mCLASS Intervention

mCLASS Intervention can be paired with Amplify Reading for intensive intervention or as part of tutoring groups.

#### How it works

- Together, the programs provide a ready-to-go intervention solution that combines the best of both worlds: streamlined lessons and an online practice component.
- While the intervention teacher works with a small group, other students continue learning independently in Amplify Reading.

# mCLASS Intervention

mCLASS Intervention makes targeted, staff-led intervention a daily reality by instantly grouping students based on their mCLASS with DIBELS 8th edition data and providing ready-to-go 30-minute lesson plans aligned to each group's needs. Students are progress monitored frequently to foster growth.



## Targeted, staff-led intervention

Our approach to intervention is designed to be teacher-led, with staff delivering the lessons to a small groups of students—either with the interventionist coming into the room, or with the students going to a different room.

## Explicit, systematic foundational skills lessons

Our bank of over 4,000 research-backed activities includes multisensory activities that use auditory, visual, tactile, and kinesthetic techniques. The program covers the five big ideas of reading: phonological awareness, phonics, fluency, vocabulary, and comprehension.

## Data-driven groups maximize growth

mCLASS Intervention arranges students by skills into small groups. Once groups are formed, mCLASS Intervention determines the ideal focus for each group and automatically prepares 10 days of customizable lessons tailored to each group. After 10 days, new groups are formed based on targeted progress monitoring measures and data.



## How mCLASS Intervention harmonizes with the Amplify early literacy suite:



### Assessment mCLASS Assessment

mCLASS data identifies risk at the earliest levels, allowing you to intervene right away with mCLASS Intervention lessons.

#### How it works

- mCLASS results place students in and out of mCLASS Intervention.
- mCLASS Intervention uses mCLASS data to create intervention groups and daily lesson plans for 10-day cycles.



### Core Instruction Amplify CKLA

Amplify CKLA provides Tier 1 instruction, which extends mCLASS Intervention Tier 2 and 3 instruction.

#### How it works

- mCLASS Intervention's explicit, multisensory lesson plans extend the strategies employed in Amplify CKLA.
- A focus on phonological awareness and phonics complements Amplify CKLA's Skills Strand.



### Personalized Learning Amplify Reading

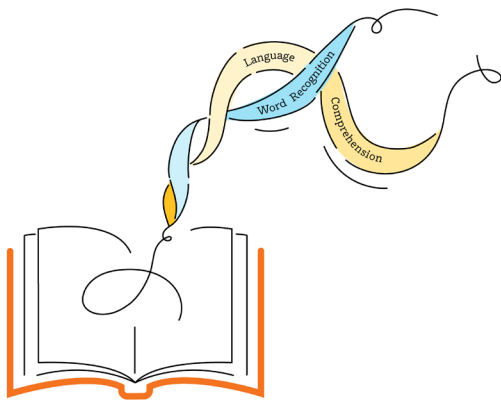
mCLASS Intervention can be paired with Amplify Reading for intensive intervention or as part of tutoring groups.

#### How it works

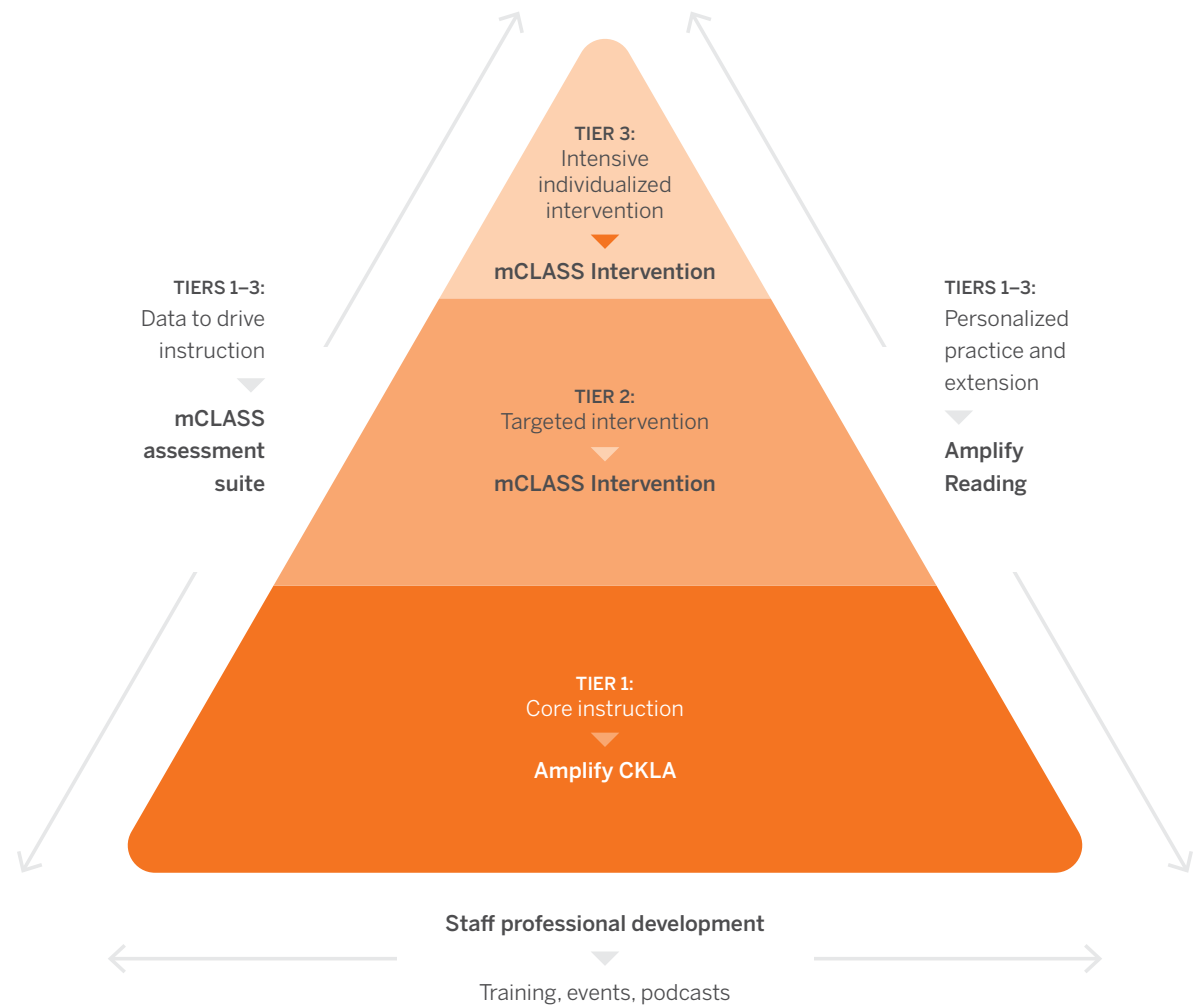
- Together, the programs provide a ready-to-go intervention solution that combines the best of both worlds: streamlined lessons and an online practice component.
- While the intervention teacher works with a small group, other students engage in independent learning independently in Amplify Reading.

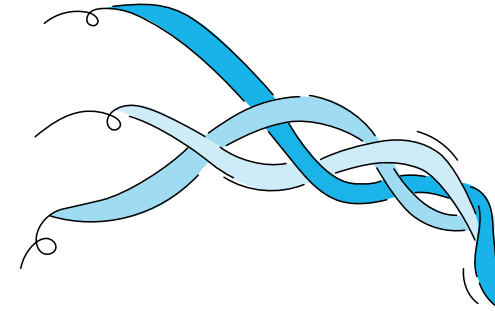
# Align your system across all instructional tiers.

The Amplify literacy suite provides a full-service solution based on the Science of Reading, so you can set up a system with high-quality programs that work together and support both students and teachers.



## How Amplify's suite maps to the Response to Intervention (RTI) model





### Scheduling and timing overview

Element	Program	Which students?	Frequency
Universal and dyslexia screening <b>TIERS: 1 2 3</b>	<b>mCLASS Assessment Suite</b> Identify risk and monitor progress through universal and dyslexia screening.	All students <ul style="list-style-type: none"> <li>Progress-monitoring as recommended for students at risk</li> </ul>	<ul style="list-style-type: none"> <li>Administer three times a year, at the beginning, middle, and end of year</li> <li>On average, takes five minutes per student</li> </ul>
Core Instruction <b>TIER: 1</b>	<b>Amplify CKLA</b> Build foundations through daily core literacy instruction with Amplify CKLA.	All students	<b>Grade K–3</b> <ul style="list-style-type: none"> <li>120 daily minutes of skills and knowledge building</li> </ul> <b>Grade 4–5</b> <ul style="list-style-type: none"> <li>90 minutes daily of comprehensive instruction</li> </ul>
Personalized Learning <b>TIERS: 1 2 3</b>	<b>Amplify Reading</b> Enable all students to enrich and extend their skills with personalized practice and remediation in Amplify Reading.	All students	<b>Grade K–3</b> <ul style="list-style-type: none"> <li>Three times a week for 15 minutes per session</li> </ul> <b>Grade 4–5</b> <ul style="list-style-type: none"> <li>Three times a week for 20 minutes per session</li> </ul>
Intervention <b>TIERS: 2 3</b>	<b>mCLASS Intervention</b> Get struggling readers back on track with staff-led mCLASS intervention.	Students at risk (below or well below benchmark)	<ul style="list-style-type: none"> <li>30 minutes per day based on need</li> <li>Simultaneously during this 30-minute block, other students can work independently on Amplify Reading or other targeted skills practice</li> </ul>

# Invest in your teachers with Science of Reading professional development.

Bringing an aligned, Science of Reading literacy system to life takes a collective effort. Strong, research-based professional development will not only accelerate your progress, but also help you build a transformative culture.



## Science of Reading: Your guide to making the shift

1. What is SoR? 2. Why SoR? 3. SoR adoption 4. Middle school 5. Insights





Amplify.



## Science of Reading: The Podcast

## We offer high-quality training resources.

### Science of Reading: The Podcast

Subscribe to our chart-topping podcast, Science of Reading: The Podcast, to hear from leading researchers and practitioners in early reading. Listen at [amplify.com/science-of-reading](https://amplify.com/science-of-reading).

### Making the Shift resource site

Our Science of Reading resource site has everything you need to make the shift to research-based literacy instruction in your district today, including free downloadable rubrics, roadmaps, and classroom resources. Visit [scienceofreading.amplify.com](https://scienceofreading.amplify.com) for more.

### Events and webinars

Our free symposia and webinars provide training on a variety of topics. We work with experts and educators to bring you the latest insights as well as bridge the gap between research and practice.

### Program-embedded training

We offer professional development for all roles including sessions for initial implementation, coaching, and strengthening. We work with tens of thousands of educators each year to successfully make the shift.



# Visit [amplify.com/science-of-reading](https://amplify.com/science-of-reading) for the podcast and free resources, and to get in touch with an expert.

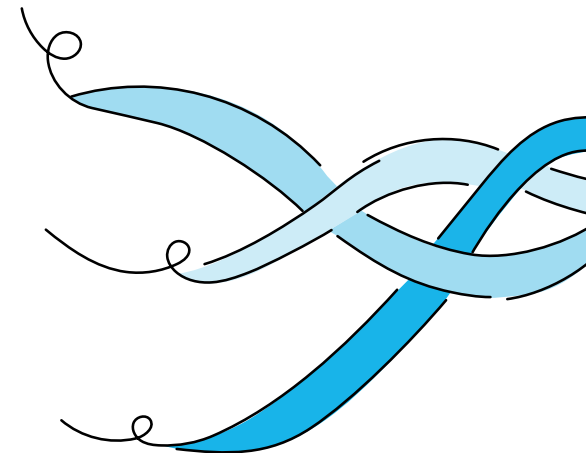
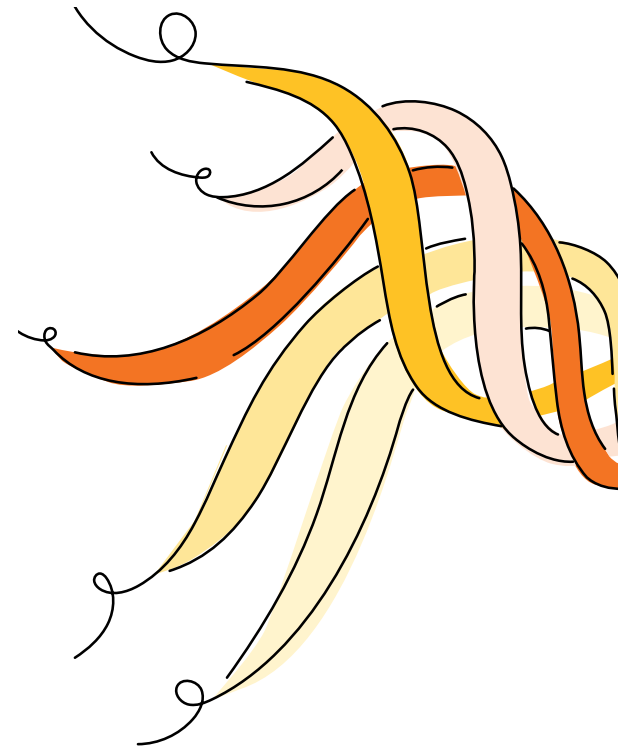
For guidance on building a complete Science of Reading system at your school, check out the following episodes:

- **S05E05**  
**Implementing Multi-Tiered Systems of Support**  
with Dr. Brittney Bills
- **S04E13**  
**Myths and misconceptions about universal screening**  
with Dr. Nancy Nelson
- **S0503**  
**The right assessment and the right data**  
with Dr. Jan Hasbrouck
- **S04E05**  
**Reading as liberation**  
with Sue Pimentel

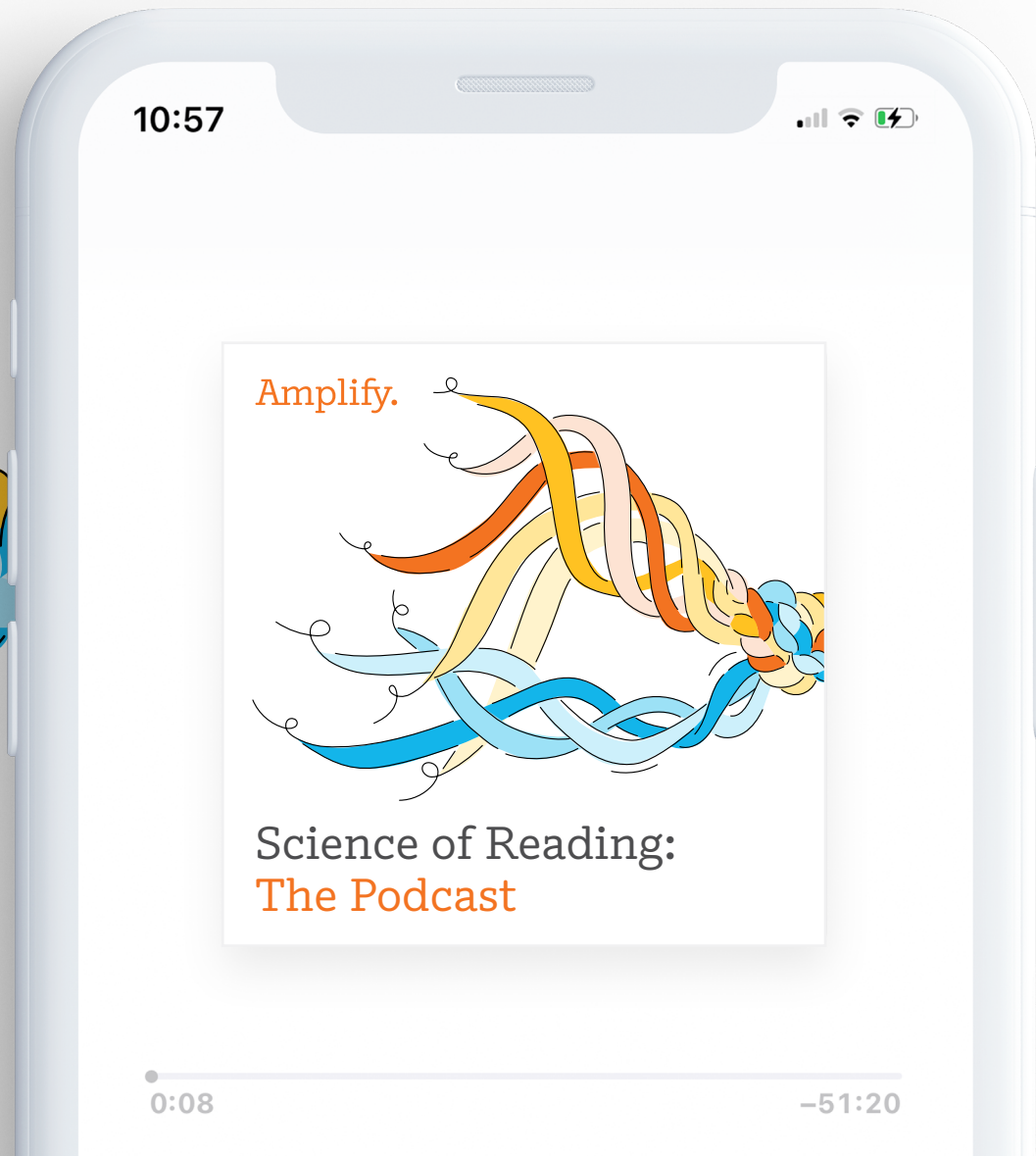
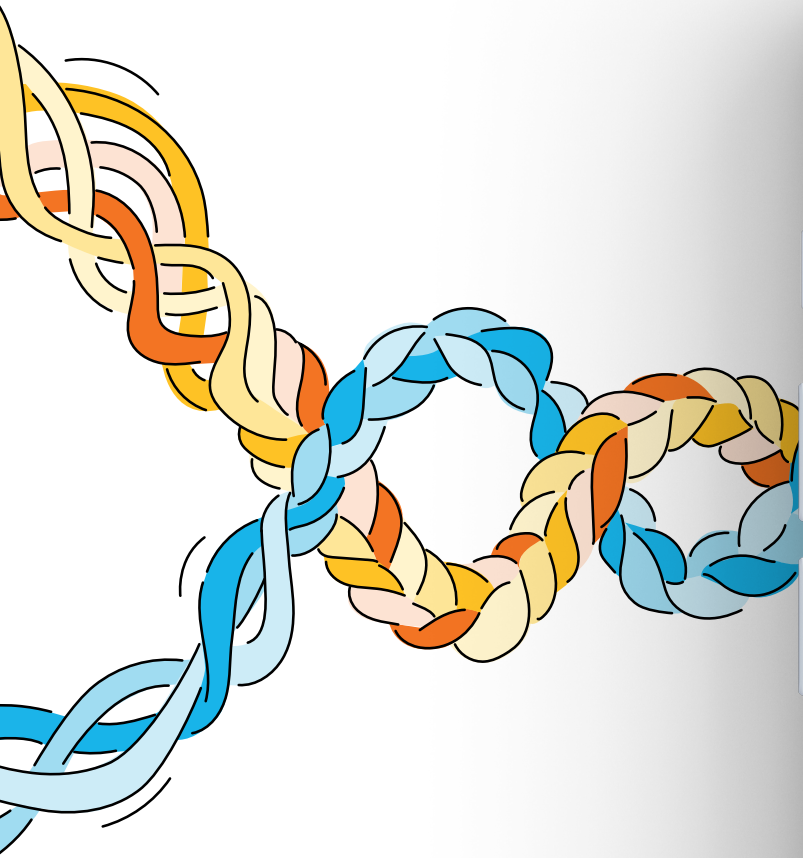


“We have a responsibility to engage in a continuous improvement process so that our system is effective for all our students.”

—Dr. Brittney Bills,  
Educator and Curriculum Coordinator,  
Grand Island Public Schools, Nebraska



The Science of Reading is for everyone



To explore and sample our early literacy suite programs, visit [amplify.com/sample\\_literacy](https://amplify.com/sample_literacy).

Amplify.

© 2022 Amplify Education, Inc.  
All trademarks and copyrights are the property of Amplify or its licensors.