

# Knowledge 12

Image Cards

Kindergarten

## Presidents and American Symbols

**This file is provided exclusively for use by students and teachers for whom the corresponding materials have been purchased or licensed from Amplify. Any other distribution or reproduction of these materials is forbidden without written permission from Amplify.**

© 2015 The Core Knowledge Foundation and its licensors  
[www.coreknowledge.org](http://www.coreknowledge.org)

Cover © 2017 Amplify Education, Inc. and its licensors  
[www.amplify.com](http://www.amplify.com)

All Rights Reserved.

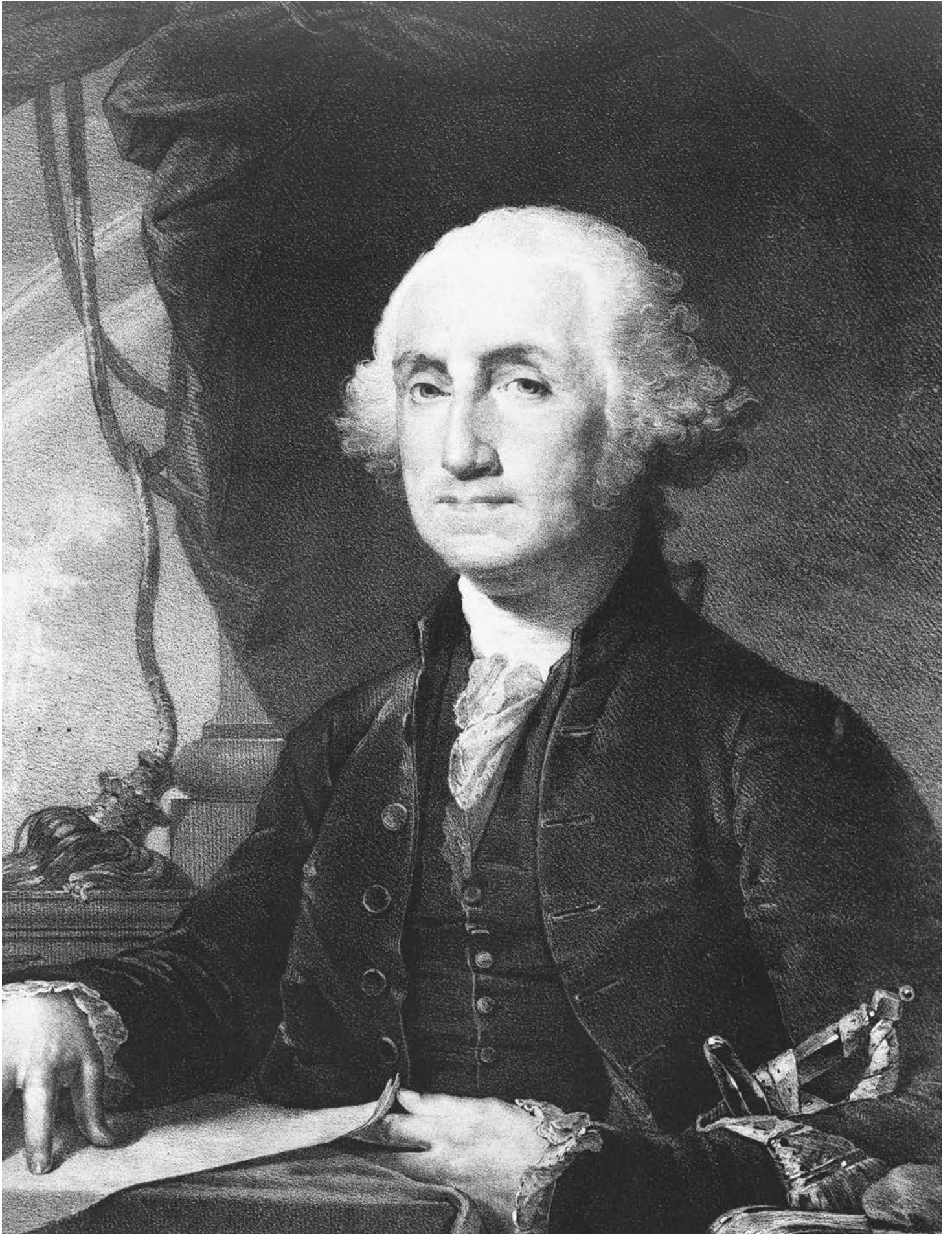
Core Knowledge Language Arts and CKLA are trademarks of the Core Knowledge Foundation.

Trademarks and trade names are shown in this book strictly for illustrative and educational purposes and are the property of their respective owners. References herein should not be regarded as affecting the validity of said trademarks and trade names.





# Presidents and American Symbols 1





## Presidents and American Symbols 2







**Presidents and American Symbols 3**







**Presidents and American Symbols 4**





**Presidents and American Symbols 5**







**Presidents and American Symbols 6**







**Presidents and American Symbols 7**







**Presidents and American Symbols 8**

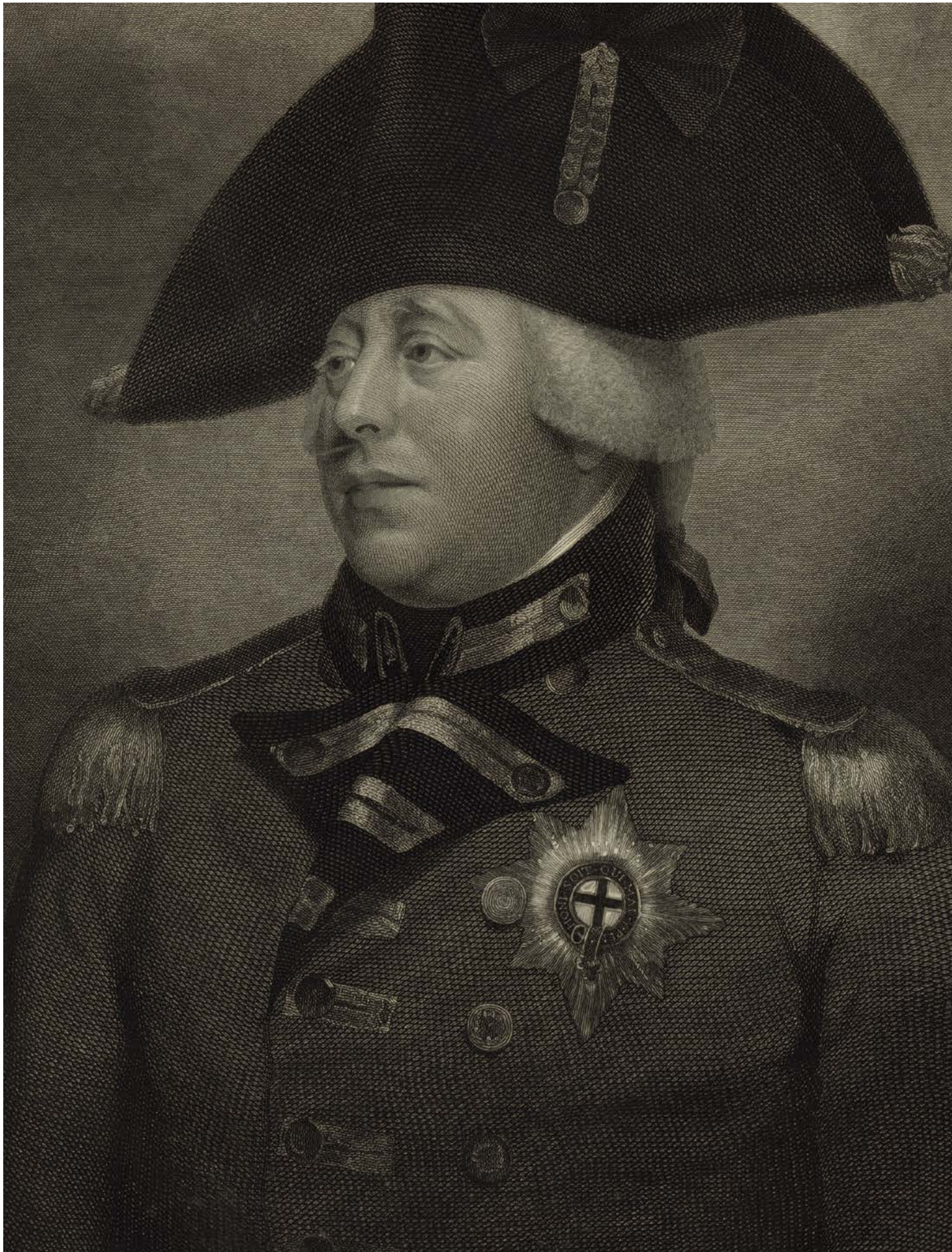






**Presidents and American Symbols 9**









**Presidents and American Symbols 10**





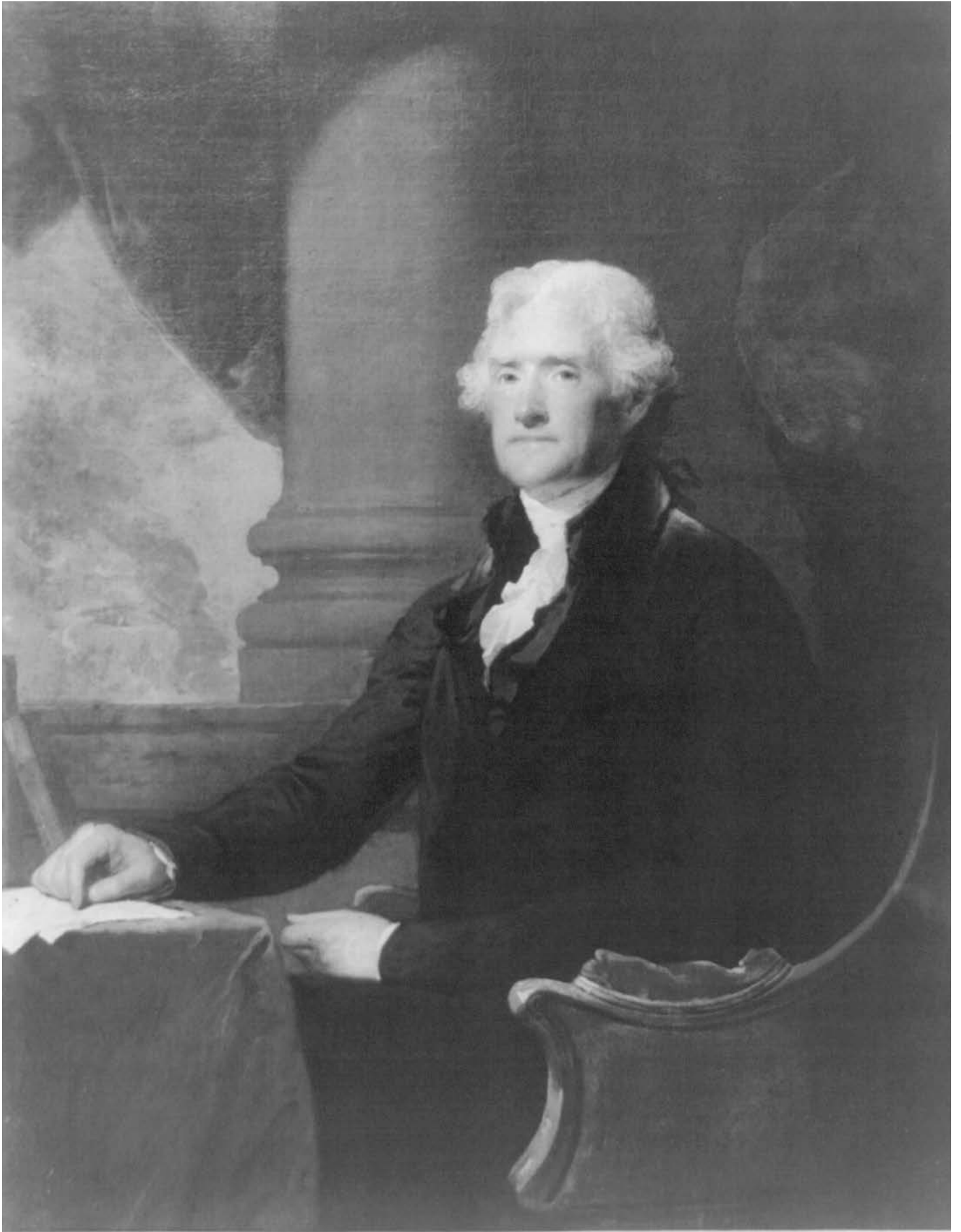
**Presidents and American Symbols 11**





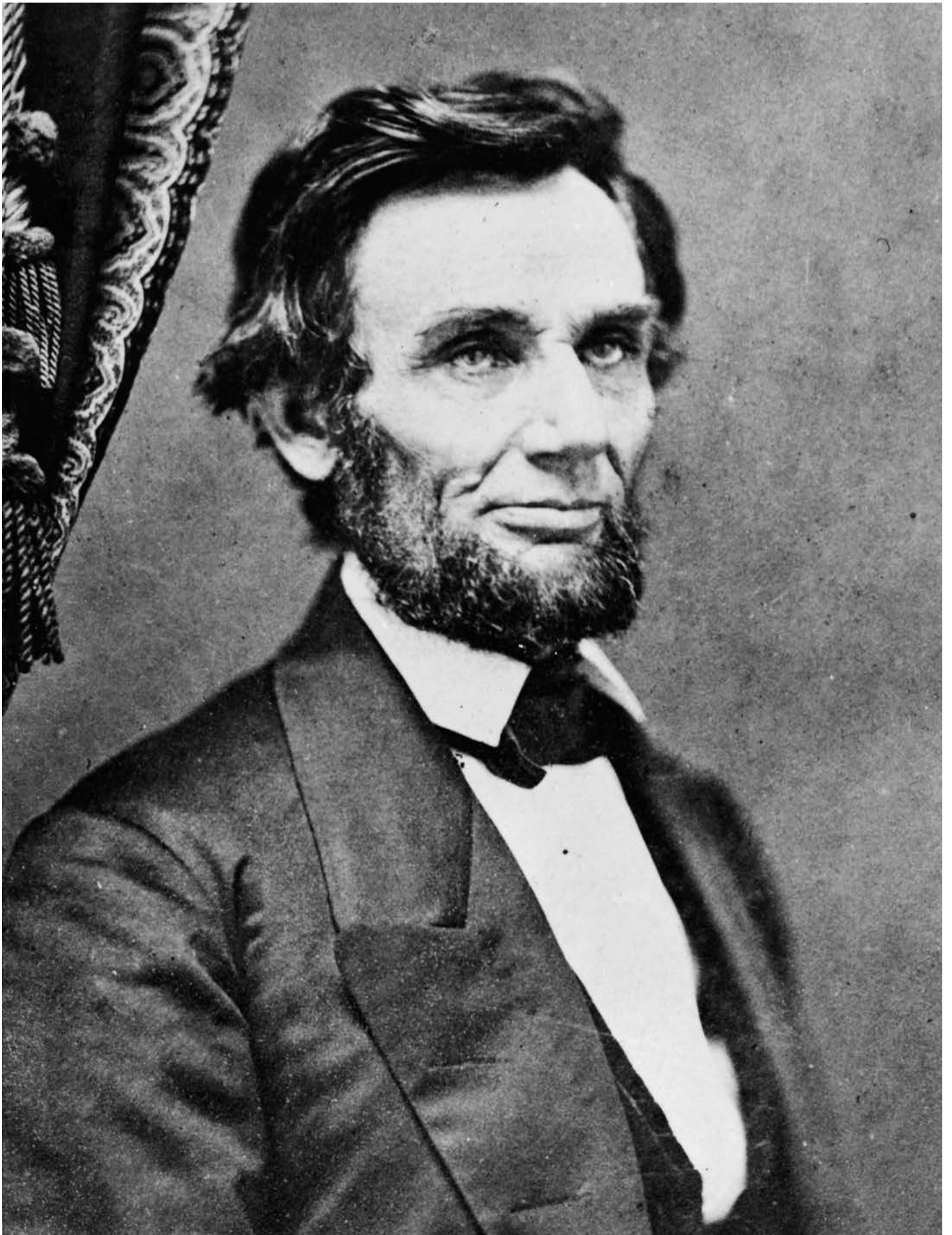


**Presidents and American Symbols 12**





**Presidents and American Symbols 13**







**Presidents and American Symbols 14**





**Presidents and American Symbols 15**







**Presidents and American Symbols 16**





**Presidents and American Symbols 17**

# Core Knowledge Language Arts

## **Series Editor-in-Chief**

E. D. Hirsch, Jr.

## **President**

Linda Bevilacqua

## **Editorial Staff**

Mick Anderson  
Robin Blackshire  
Laura Drummond  
Emma Earnst  
Lucinda Ewing  
Sara Hunt  
Rosie McCormick  
Cynthia Peng  
Liz Pettit  
Tonya Ronayne  
Deborah Samley  
Kate Stephenson  
Elizabeth Wafler  
James Walsh  
Sarah Zelinke

## **Design and Graphics Staff**

Kelsie Harman  
Liz Loewenstein  
Bridget Moriarty  
Lauren Pack

## **Consulting Project Management Services**

ScribeConcepts.com

## **Additional Consulting Services**

Erin Kist  
Carolyn Pinkerton  
Scott Ritchie  
Kelina Summers



## Acknowledgments

These materials are the result of the work, advice, and encouragement of numerous individuals over many years. Some of those singled out here already know the depth of our gratitude; others may be surprised to find themselves thanked publicly for help they gave quietly and generously for the sake of the enterprise alone. To helpers named and unnamed we are deeply grateful.

### Contributors to Earlier Versions of these Materials

Susan B. Albaugh, Kazuko Ashizawa, Kim Berrall, Ang Blanchette, Nancy Braier, Maggie Buchanan, Paula Coyner, Kathryn M. Cummings, Michelle De Groot, Michael Donegan, Diana Espinal, Mary E. Forbes, Michael L. Ford, Sue Fulton, Carolyn Gosse, Dorrit Green, Liza Greene, Ted Hirsch, Danielle Knecht, James K. Lee, Matt Leech, Diane Henry Leipzig, Robin Luecke, Martha G. Mack, Liana Mahoney, Isabel McLean, Steve Morrison, Juliane K. Munson, Elizabeth B. Rasmussen, Ellen Sadler, Rachael L. Shaw, Sivan B. Sherman, Diane Auger Smith, Laura Tortorelli, Khara Turnbull, Miriam E. Vidaver, Michelle L. Warner, Catherine S. Whittington, Jeannette A. Williams

We would like to extend special recognition to Program Directors Matthew Davis and Souzanne Wright who were instrumental to the early development of this program.

### Schools

We are truly grateful to the teachers, students, and administrators of the following schools for their willingness to field test these materials and for their invaluable advice: Capitol View Elementary, Challenge Foundation Academy (IN), Community Academy Public Charter School, Lake Lure Classical Academy, Lepanto Elementary School, New Holland Core Knowledge Academy, Paramount School of Excellence, Pioneer Challenge Foundation Academy, New York City PS 26R (The Carteret School), PS 30X (Wilton School), PS 50X (Clara Barton School), PS 96Q, PS 102X (Joseph O. Loretan), PS 104Q (The Bays Water), PS 214K (Michael Friedsam), PS 223Q (Lyndon B. Johnson School), PS 308K (Clara Cardwell), PS 333Q (Goldie Maple Academy), Sequoyah Elementary School, South Shore Charter Public School, Spartanburg Charter School, Steed Elementary School, Thomas Jefferson Classical Academy, Three Oaks Elementary, West Manor Elementary.

And a special thanks to the CKLA Pilot Coordinators Anita Henderson, Yasmin Lugo-Hernandez, and Susan Smith, whose suggestions and day-to-day support to teachers using these materials in their classrooms was critical.

Amplify Core Knowledge Language Arts



### Credits

Every effort has been taken to trace and acknowledge copyrights. The editors tender their apologies for any accidental infringement where copyright has proved untraceable. They would be pleased to insert the appropriate acknowledgment in any subsequent edition of this publication. Trademarks and trade names are shown in this publication for illustrative purposes only and are the property of their respective owners. The references to trademarks and trade names given herein do not affect their validity.

All photographs are used under license from Shutterstock, Inc. unless otherwise noted.

### Illustrators and Image Sources

Cover: Steve Morrison; Domain Icon: Shutterstock; Image Card 1: Shutterstock; Image Card 2: Library of Congress, Prints & Read: Photographs Division, LC-USZ62-7265; Image Card 3: Shutterstock; Image Card 4: Shutterstock; Image Card 5: Shutterstock; Image Card 6: Scott Hammond; Image Card 7: Scott Hammond; Image Card 8: Scott Hammond; Image Card 9: Scott Hammond; Image Card 10: Library of Congress, Prints and Photographs, LC-DIG-pga-04155; Image Card 11: Shutterstock; Image Card 12: Shutterstock; Image Card 13: Library of Congress, Prints and Photographs Division, LC-USZ62-8195; Image Card 14: Library of Congress, Prints and Photographs, LC-USZ62-7334; Image Card 15: Library of Congress, Prints and Photographs, LC-DIG-ppmsca-36423; Image Card 16: Shutterstock; Image Card 17: Shutterstock

Regarding the Shutterstock items listed above, please note: "No person or entity shall falsely represent, expressly or by way of reasonable implication, that the content herein was created by that person or entity, or any person other than the copyright holder(s) of that content."