

Amplify Tutoring

LAUSD APPROVED PROVIDER FOR GRADES K-6

What is Amplify Tutoring?

Amplify Tutoring is a comprehensive tutoring program designed to build reading proficiency and confidence among LAUSD's during non-instructional hours with small groups of students. During each tutoring session, students will be supported by a certified Amplify Tutor and will use mCLASS Intervention, which is driven by the data your schools is already collecting with mCLASS DIBELS 8.

Why choose Amplify Tutoring?

Amplify helps schools close foundational literacy skills gaps through a proven, research-based, high-impact tutoring protocol. Grounded in Amplify's gold-standard assessment mCLASS® and research-backed mCLASS Intervention, Amplify Tutoring provides dedicated program management that helps schools:

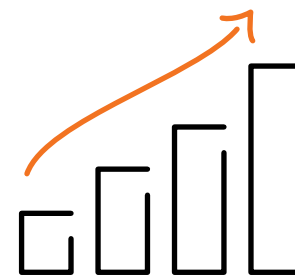
- **Group** students.
- **Develop and implement** a tutoring schedule.
- **Establish a cadence** for reviewing tutoring data.

Programs run in up to 15-week semester cycles or up to 30-week year-long cycles.

Research-aligned

Amplify's tutoring offerings are aligned with research-based best practices for High-Impact Tutoring:

- **Consistency:** Small groups of up to 5 students meet with the same tutor.
- **HQIM:** Tutoring is grounded in high-quality, tutor-friendly instructional materials.
- **Training:** Tutors receive initial and ongoing professional development.
- **Data:** Lessons are directly aligned to student needs based on data.



Students in Amplify Tutoring are more likely to make outsized gains and narrow their skills gaps.



“Our goal is to ensure all students receive **the supports they need to be successful**. Knowing our prioritization around the **Science of Reading** and the importance of foundational skills, we wanted a **high-quality tutoring program** to support the grade-level instruction students receive. Our **partnership with Amplify** allowed us to customize a tutoring program to not only support our students, but also to align with our continued focus on instruction and priorities.”

—Executive Director, Teaching and Learning

With Amplify Tutoring, everyone in LAUSD wins!

Students

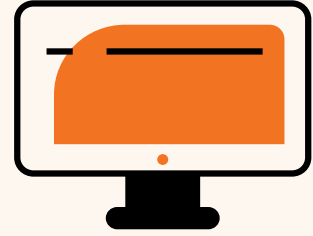
- More likely to make **outsized gains and narrow the achievement gap** than peers not in tutoring
- Build a strong relationship with a **consistent, caring adult**

Teachers

- Have **full transparency into tutoring lessons and progress monitoring data** anytime by logging into the mCLASS platform
- See **clear alignment** with mCLASS data
- Experience **no breaks in core instructional time**, as scheduled tutoring occurs outside school hours

Tutors

- **Highly trained, diverse** group of tutors
- Undergo a **competitive hiring process and full background check**
- **Develop strong relationships and make a positive impact** with consistent student groups throughout the semester



Ready to learn more?

Visit amplify.com/lausd-tutoring or email us at lausdtutoring@amplify.com to request more information or to sign up for an upcoming informational session.

Informational sessions will also be provided for parents and caregivers in both English and Spanish.

“...a tremendous ability to differentiate and provide targeted instruction.”

—School administrator